

Part number

JMPAP 24.232



Surface mounting housing, JEI®-P series, with 2 levers, M32 x 2 cable entry, size "104.27", high construction

Product description

| | |
|----------------------|-----------------------------|
| Product type | Surface mounting housing |
| Series | JEI®-P |
| Closing type | With 2 levers |
| Size | Size 104.27 |
| Cable entry | With cable entry M32 x 2 |
| Specification | High construction |

Technical data

IP degree of protection IP65

Further technical details

Operating temperature range (min, max) -40°C...+125°C

Material properties

| | |
|------------------------|--------------------------------------|
| Other materials | Lever: Polyamide (PA) Gasket: NBR |
| Colour | RAL 7040 grey |

Approvals / Standards

Certifications DNV, BV

General ordering information

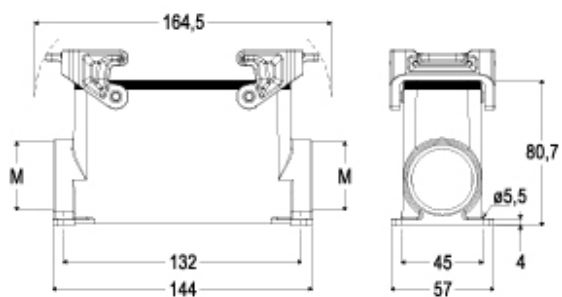
EAN13 code 8015747219082

Part number

JMPAP 24.232



Catalogue drawings



Notes