

Part number

FM 910 RI



Cover, FM series, reduction for inclined flush-mounting socket-outlets

Product description

Product type	Cover
Series	FM
Size	90 x 100 mm
Specification	Reduction for inclined flush-mounting socket-outlets

Further technical details

Weight	46,50 g
Operating temperature range (min, max)	-40°C ... +125°C

Material properties

Colour	RAL 7035 grey
---------------	---------------

General ordering information

EAN13 code	8015747048026
-------------------	---------------

Packaging Information

Sub-packaging weight	0,05 kg
Sub-packaging description	Plastic packaging
Sub-packaging quantity	1 Pcs
Sub-packaging EAN barcode	8015747048033

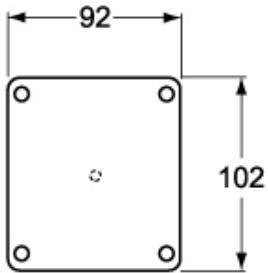
Part number

FM 910 RI

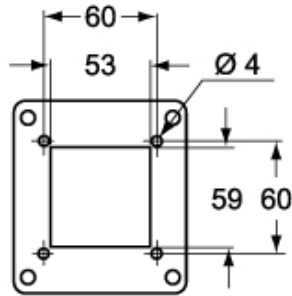


Catalogue drawings

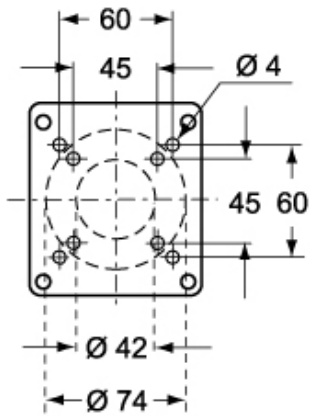
FM 910 CVU



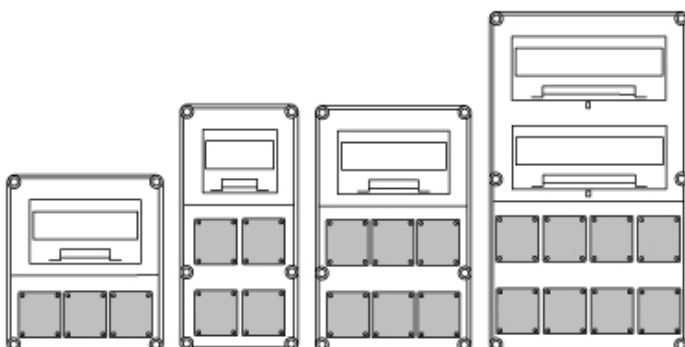
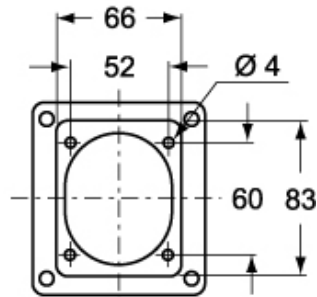
FM 910 RC



FM 910 CV



FM 910 RI



Notes