

Part number

# CX 03 4M



Male modular insert, Mixo series, crimp connection, 3 poles, 1 module, 40 A 400/690 V 6 kV 3

Product description		Material properties	
<b>Product type</b>	Modular insert	<b>Main material</b>	Polycarbonate
<b>Series</b>	Mixo	<b>Colour</b>	RAL 7032 grey
<b>Connection type</b>	Crimp connection	<b>RoHs conformity</b>	Compliant
<b>Gender</b>	Male	<b>China RoHs - EFUP</b>	E
<b>N. of poles</b>	3 poles	<b>REACH SVHC substances</b>	No
<b>Size</b>	1 module	<b>Approvals / Standards</b>	
<b>Specification</b>	Standard & HNM (High Number of Matings)	<b>Reference standard</b>	EN 61984:2009-06
<b>Technical data</b>		<b>Certifications</b>	CSA, CQC, DNV, BV, EAC
<b>Current</b>	40 A	<b>UL</b>	ECBT2
<b>Voltage</b>	400 - 690 V	<b>cUL</b>	ECBT8
<b>Rated impulse withstand voltage</b>	6 kV	<b>General ordering information</b>	
<b>Pollution degree</b>	3	<b>EAN13 code</b>	8015747041720
<b>Rated voltage according to UL/CSA</b>	600 V	<b>eCl@ss 8.1</b>	27440205
<b>IP degree of protection</b>	IP20 without enclosure, IP65/IP66/IP68/IP69 with enclosure	<b>ETIM 7.0</b>	EC000438
<b>Further technical details</b>		<b>Packaging Information</b>	
<b>Characteristics according to EN 61984</b>	40A 400/690V 6kV 3	<b>Packaging length</b>	180,00 mm
<b>Insulation resistance</b>	≥ 10 GΩ	<b>Packaging height</b>	120,00 mm
<b>Contact resistance</b>	≤ 0,3 mΩ	<b>Packaging width</b>	155,00 mm
<b>Weight</b>	13,00 g	<b>Packaging weight</b>	0,95 kg
<b>Operating temperature range (min, max)</b>	-40 °C ... +125 °C	<b>Packaging volume</b>	3,35 dm <sup>3</sup>
<b>UL 94 flammability rating</b>	V-0	<b>Packaging description</b>	Carton box
		<b>Packaging quantity</b>	60 Pcs
		<b>Packaging EAN code</b>	8015747221184
		<b>Sub-packaging length</b>	35,00 mm
		<b>Sub-packaging height</b>	40,00 mm
		<b>Sub-packaging width</b>	155,00 mm
		<b>Sub-packaging weight</b>	0,16 kg
		<b>Sub-packaging volume</b>	0,22 dm <sup>3</sup>
		<b>Sub-packaging description</b>	Carton tray
		<b>Sub-packaging quantity</b>	10 Pcs
		<b>Sub-packaging EAN barcode</b>	8015747041737

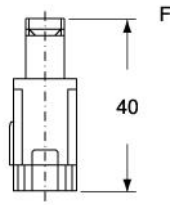
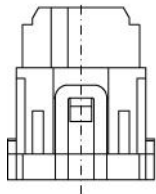
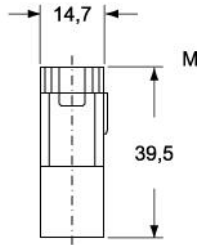
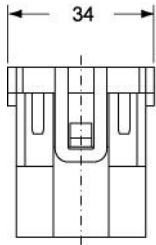
Part number

# CX 03 4M

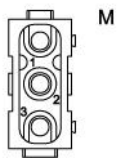
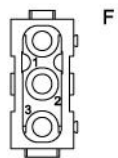


Catalogue drawings

CX 03 4M

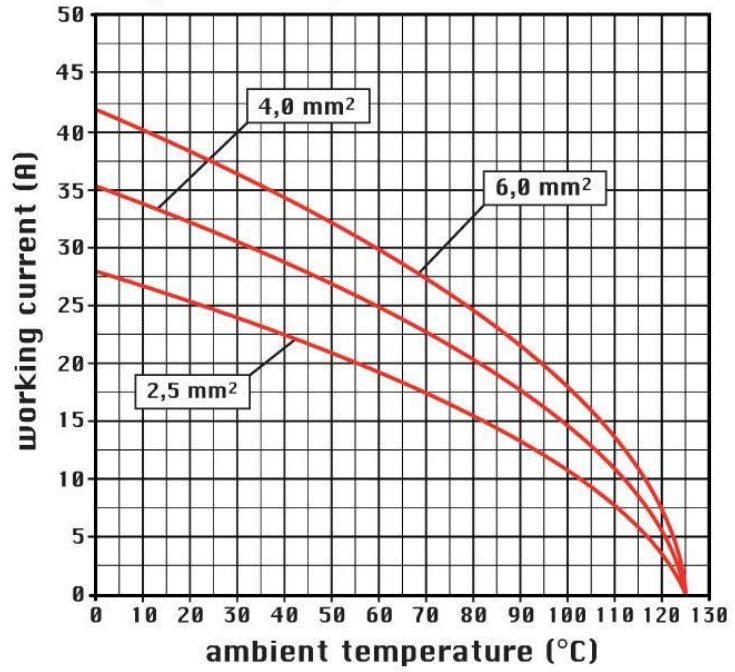


CX 03 4F



Catalogue drawings

diagram CX 03 poles



Notes