

Part number

CX 03 4F



Female modular insert, Mixo series, crimp connection, 3 poles, 1 module, 40 A 400/690 V 6 kV 3

Product description

Product type	Modular insert
Series	Mixo
Connection type	Crimp connection
Gender	Female
N. of poles	3 poles
Size	1 module
Specification	Standard & HNM (High Number of Matings)

Technical data

Current	40 A
Voltage	400 - 690 V
Rated impulse withstand voltage	6 kV
Pollution degree	3
Rated voltage according to UL/CSA	600 V
IP degree of protection	IP20 without enclosure, IP65/IP66/IP68/IP69 with enclosure

Further technical details

Characteristics according to EN 61984	40A 400/690V 6kV 3
Insulation resistance	≥ 10 GΩ
Contact resistance	≤ 0,3 mΩ
Weight	11,50 g
Operating temperature range (min, max)	-40 °C ... +125 °C
UL 94 flammability rating	V-0

Material properties

Main material	Polycarbonate
Colour	RAL 7032 grey
RoHs conformity	Compliant
China RoHs - EFUP	E
REACH SVHC substances	No

Approvals / Standards

Reference standard	EN 61984:2009-06
Certifications	CSA, CQC, DNV, BV, EAC
UL	ECBT2
cUL	ECBT8

General ordering information

EAN13 code	8015747041706
eCl@ss 8.1	27440205
ETIM 7.0	EC000438

Packaging Information

Packaging length	180,00 mm
Packaging height	120,00 mm
Packaging width	155,00 mm
Packaging weight	0,90 kg
Packaging volume	3,35 dm ³
Packaging description	Carton box
Packaging quantity	60 Pcs
Packaging EAN code	8015747221177
Sub-packaging length	35,00 mm
Sub-packaging height	40,00 mm
Sub-packaging width	155,00 mm
Sub-packaging weight	0,15 kg
Sub-packaging volume	0,22 dm ³
Sub-packaging description	Carton tray
Sub-packaging quantity	10 Pcs
Sub-packaging EAN barcode	8015747041713

Part number

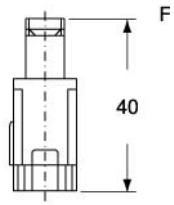
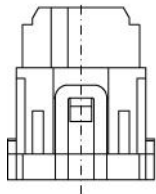
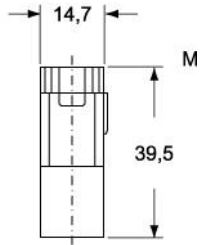
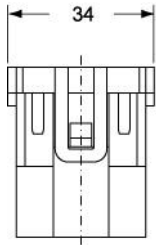
CX 03 4F



Catalogue drawings

Catalogue drawings

CX 03 4M



CX 03 4F

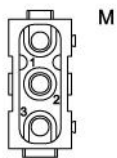
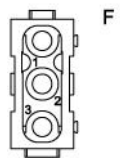
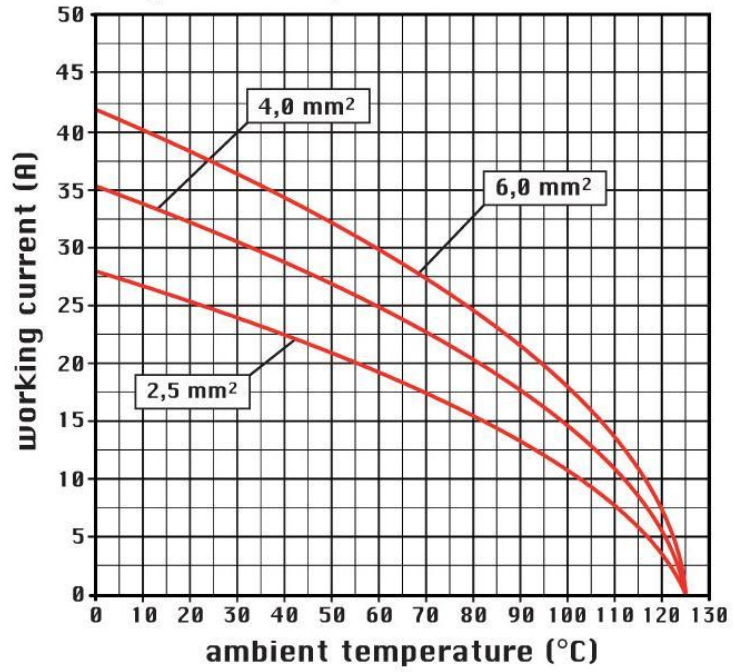


diagram CX 03 poles



Notes