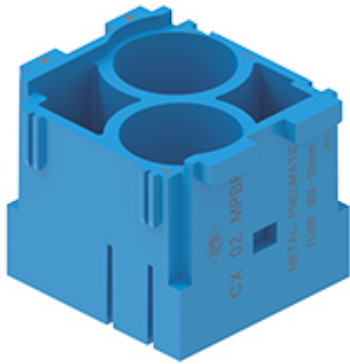


Part number

CX 02 MPBF



Female modular insert, Mixo series, for pneumatic contacts, 2 modules, with 2 seats for tube diameter 8,0-10 mm

Product description

Product type	Modular insert
Series	Mixo
Connection type	Pneumatic
Gender	
N. of poles	2 poles
Size	2 modules
Specification	With 2 seats for tube diameter 8,0-10 mm

Further technical details

Mating cycles	≥ 500 ≥ 10.000 (HNM MIXO frames and enclosures)
Insulation resistance	≥ 10 G Ω
Weight	9,00 g
Operating temperature range (min, max)	-40°C ... +80°C
UL 94 flammability rating	V-0

Material properties

Main material	Polycarbonate (PC)
Colour	RAL 5015 blue
RoHs conformity	Compliant
China RoHs - EFUP	E
REACH SVHC substances	No

General ordering information

EAN13 code	8015747193320
eCl@ss 8.1	27440205
ETIM 7.0	EC000438

Packaging Information

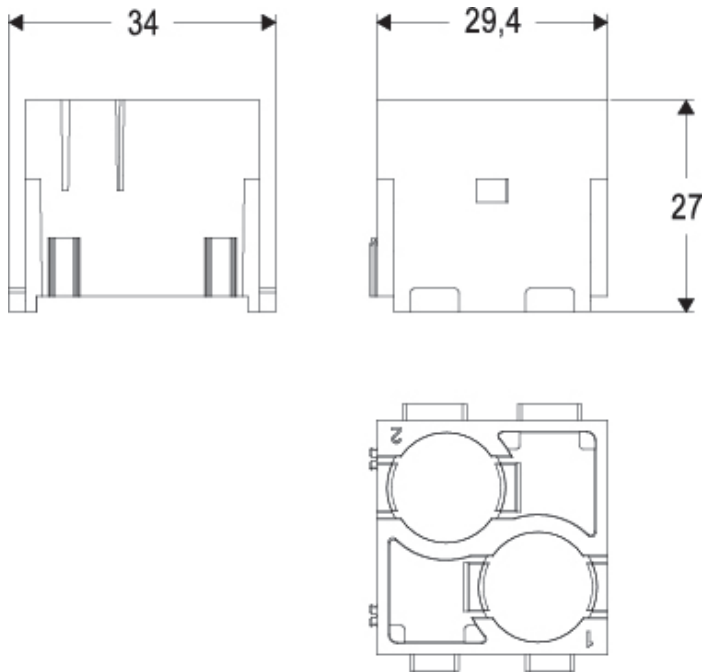
Packaging length	350,00 mm
Packaging height	105,00 mm
Packaging width	145,00 mm
Packaging weight	0,84 kg
Packaging volume	5,33 dm ³
Packaging description	Carton box
Packaging quantity	60 Pcs
Packaging EAN code	8015747193344
Sub-packaging length	35,00 mm
Sub-packaging height	40,00 mm
Sub-packaging width	155,00 mm
Sub-packaging weight	0,07 kg
Sub-packaging volume	0,22 dm ³
Sub-packaging description	Carton tray
Sub-packaging quantity	5 Pcs
Sub-packaging EAN barcode	8015747193368

Part number

CX 02 MPBF



Catalogue drawings



Notes