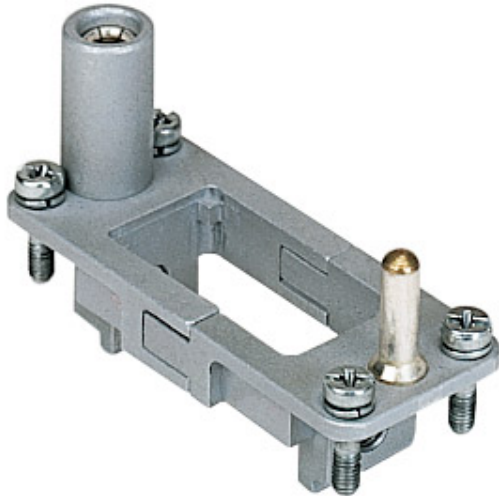


Part number  
**CX 01 T**



Frame for Mixo inserts, 1 module, for 1 modular insert and enclosures size "49.16"

Product description	
<b>Product type</b>	Frame for Mixo inserts
<b>Size</b>	1 module
<b>Specification</b>	For 1 modular insert and enclosures size "49.16"
Further technical details	
<b>Weight</b>	38,00 g
<b>UL 94 flammability rating</b>	V-0

Material properties	
<b>RoHs conformity</b>	Compliant with exemption 6(c): copper alloy containing up to 4% lead by weight
<b>China RoHs - EFUP</b>	50
<b>REACH SVHC substances</b>	Yes Lead
<b>SCIP number</b>	C0556c52-3b1b-4ffb-87d5-58c9db853c44
Approvals / Standards	
<b>UL</b>	ECBT2
<b>cUL</b>	ECBT8

General ordering information	
<b>EAN13 code</b>	8015747095891
<b>eCl@ss 8.1</b>	27440210
<b>ETIM 7.0</b>	EC002310
Packaging Information	
<b>Packaging length</b>	205,00 mm
<b>Packaging height</b>	135,00 mm
<b>Packaging width</b>	135,00 mm
<b>Packaging weight</b>	2,55 kg
<b>Packaging volume</b>	3,74 dm <sup>3</sup>
<b>Packaging description</b>	Carton box
<b>Packaging quantity</b>	60 Pcs
<b>Packaging EAN code</b>	8015747044363
<b>Sub-packaging length</b>	118,00 mm
<b>Sub-packaging height</b>	32,00 mm
<b>Sub-packaging width</b>	60,00 mm
<b>Sub-packaging weight</b>	0,26 kg
<b>Sub-packaging volume</b>	0,23 dm <sup>3</sup>
<b>Sub-packaging description</b>	Carton tray
<b>Sub-packaging quantity</b>	6 Pcs
<b>Sub-packaging EAN barcode</b>	8015747112543

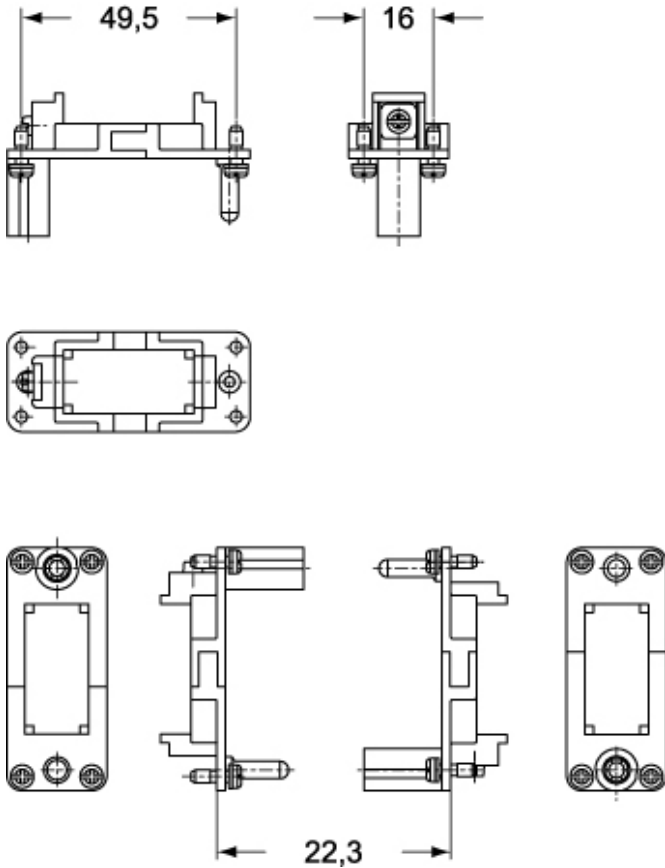
Part number

# CX 01 T



Catalogue drawings

**CX 01 T**



Notes

### California Proposition 65 Information



**WARNING**

This product can expose you to lead and its compounds, known to the State of California to cause cancer and/or reproductive toxicity. For more information go to [www.P65Warnings.ca.gov](http://www.P65Warnings.ca.gov).