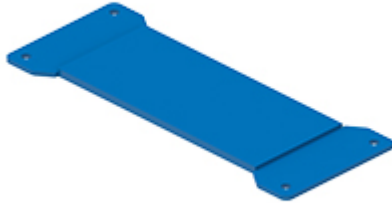


Part number

CR 24 GTPC



Gasket for surface mounting housings T-TYPE/H e T-TYPE/C series, for size "104.27"

Product description

| | |
|----------------------|---|
| Product type | Gasket |
| Specification | For surface mounting housings T-TYPE/H and T-TYPE/C series For size "104.27" |

Further technical details

| | |
|---------------|---------|
| Weight | 13,00 g |
|---------------|---------|

Material properties

| | |
|------------------------------|-----------------|
| Main material | Silicone rubber |
| Colour | RAL 5015 blue |
| RoHs conformity | Compliant |
| China RoHs - EFUP | E |
| REACH SVHC substances | No |

General ordering information

| | |
|-------------------|---------------|
| EAN13 code | 8015747274722 |
| eCl@ss 8.1 | 27449290 |
| ETIM 7.0 | EC002943 |

Packaging Information

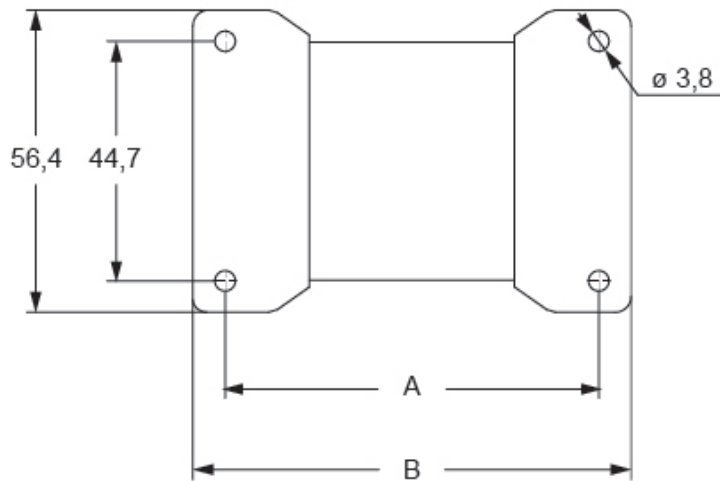
| | |
|----------------------------------|---------------|
| Sub-packaging weight | 0,13 kg |
| Sub-packaging description | Plastic bag |
| Sub-packaging quantity | 10 Pcs |
| Sub-packaging EAN barcode | 8015747274869 |

Part number

CR 24 GTPC



Catalogue drawings



| part No. | polarity | A | B |
|-------------------|----------|-------|-------|
| CR 06 GTPC | 06 | 69,7 | 81,7 |
| CR 10 GTPC | 10 | 81,7 | 93,9 |
| CR 16 GTPC | 16 | 104,7 | 116,7 |
| CR 24 GTPC | 24 | 131,7 | 143,6 |

Notes