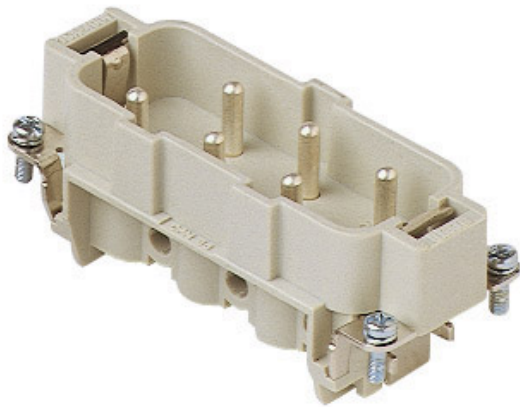



Part number

CPM 06 X



Male insert, CP series, screw terminal connection, 6 poles + PE, 35 A 400/690 V 6 kV 3, size "77.27", without plate

Product description		Material properties	
Product type	Insert	Main material	Polycarbonate (PC)
Series	CP	Other materials	Contacts: copper alloy
Connection type	Screw terminal connection	Colour	RAL 7032 grey
Gender	Male		Compliant with exemption 6(c): copper alloy containing up to 4% lead by weight
N. of poles	6 poles + 	RoHs conformity	
Size	Size 77.27	China RoHs - EFUP	50
Specification	Without plate, for prepared conductors	REACH SVHC substances	Yes Lead
Technical data		SCIP number	1a9c93ff-0445-4a16-81e3-1609ac5274d6
Current	35 A	Approvals / Standards	
Voltage	400 - 690 V	Reference standard	EN 61984:2009-06
Rated impulse withstand voltage	6 kV	Certifications	CSA, CQC, DNV, BV, EAC
Pollution degree	3	UL	ECBT2
Rated voltage according to UL/CSA	600 V	General ordering information	
Wire cross-section	0,75 mm ² - 6,00 mm ²	EAN13 code	8015747213424
AWG size	18 - 10	Packaging Information	
Contact type	Turned silver plated	Packaging length	230,00 mm
IP degree of protection	IP20 without enclosure, IP65/IP66/IP68/IP69 with enclosure	Packaging height	110,00 mm
Further technical details		Packaging width	180,00 mm
Mating cycles	≥ 500	Packaging weight	1,89 kg
Insulation resistance	≥ 10 GΩ	Packaging volume	4,55 dm ³
Contact resistance	≤ 0,5 mΩ	Packaging description	Carton box
Weight	81,50 g	Packaging quantity	20 Pcs
Operating temperature range (min, max)	-40 °C ... +125 °C	Packaging EAN code	8015747213455
UL 94 flammability rating	V-0	Sub-packaging length	87,00 mm
Torque for main contact	M4: 1,2 Nm; 10,6 lb.in (Ph1 or 0,8 x 4 mm)	Sub-packaging height	36,00 mm
		Sub-packaging width	180,00 mm
		Sub-packaging weight	0,47 kg
		Sub-packaging volume	0,56 dm ³
		Sub-packaging description	Carton tray
		Sub-packaging quantity	5 Pcs
		Sub-packaging EAN barcode	8015747213462

Part number

CPM 06 X



Notes

California Proposition 65 Information



WARNING

This product can expose you to lead and its compounds, known to the State of California to cause cancer and/or reproductive toxicity. For more information go to www.P65Warnings.ca.gov.

California Proposition 65 Information



WARNING

This product can expose you to lead and its compounds, known to the State of California to cause cancer and/or reproductive toxicity. For more information go to www.P65Warnings.ca.gov.