

Part number

COB 16 CMS



Insulating insert carrier enclosure for mobile mounting, COB panel supports series, side cable entry with cable clamp, for inserts with 77,5 x 27 mm screw fixing centre distance

Product description	
Product type	Insulating insert carrier enclosure for mobile mounting
Series	COB panel supports
Cable entry	Side cable entry with cable clamp
Specification	For inserts with 77,5 x 27 mm screw fixing centre distance
Technical data	
IP degree of protection	IP20
Further technical details	
Weight	85,00 g
Operating temperature range (min, max)	-40°C...+125°C

Material properties	
Colour	RAL 7032 grey
RoHs conformity	Compliant with exemption 6(c): copper alloy containing up to 4% lead by weight
China RoHs - EFUP	50
REACH SVHC substances	Yes Lead
SCIP number	B008b8e4-629e-4e70-ab7d-b3b67464925d
Approvals / Standards	
Certifications	DNV, BV
UL	ECBT2
cUL	ECBT8
General ordering information	
EAN13 code	8015747036610
eCl@ss 8.1	27440202
ETIM 7.0	EC000437
Packaging Information	
Packaging length	225,00 mm
Packaging height	130,00 mm
Packaging width	150,00 mm
Packaging weight	0,85 kg
Packaging volume	4,39 dm ³
Packaging description	Carton box
Packaging quantity	10 Pcs
Packaging EAN code	8015747036627
Sub-packaging weight	0,09 kg
Sub-packaging description	Plastic packaging
Sub-packaging quantity	1 Pcs
Sub-packaging EAN barcode	8015747036634

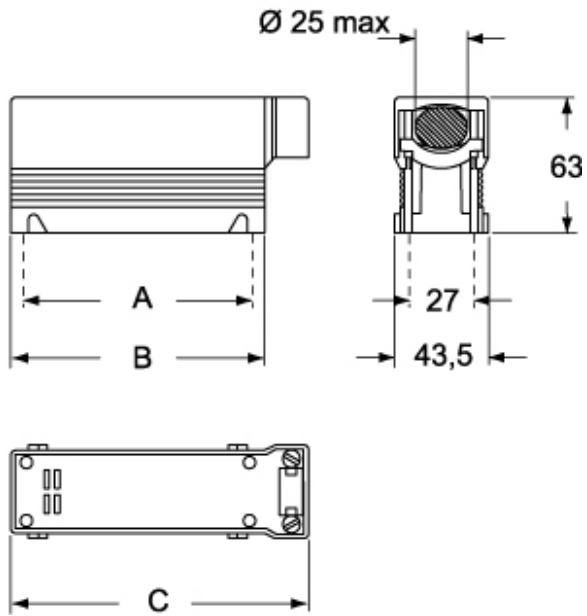
Part number

COB 16 CMS



Catalogue drawings

COB..CMS



Notes