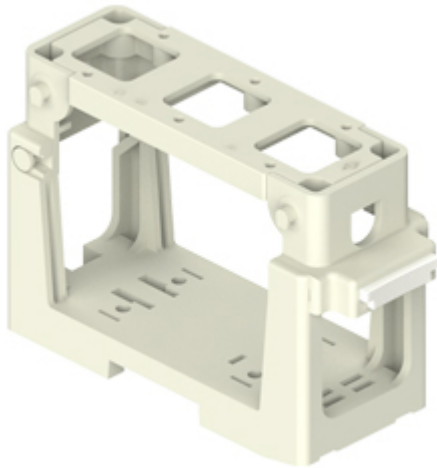


Part number

# COB 03/3 BC



Connector carrier baseplate for mounting on DIN EN60715 rail or with screws, COB panel supports series, for 3 bulkhead mounting housings size "21.21"

## Product description

|                      |   |
|----------------------|---|
| <b>Product type</b>  | Connector carrier baseplate for mounting on DIN EN60715 rail or with screws |
| <b>Series</b>        | COB panel supports  |
| <b>Specification</b> | For 3 bulkhead mounting housings size "21.21"                               |

## Technical data

|   |                |
|---|----------------|
| <b>IP degree of protection</b>                | IP20           |
| <b>Further technical details</b>              |                |
| <b>Weight</b>                                 | 101,50 g       |
| <b>Operating temperature range (min, max)</b> | -40°C...+125°C |

## Material properties

|                              |  |
|------------------------------|--|
| <b>Colour</b>                | RAL 7032 grey  |
| <b>RoHs conformity</b>       | Compliant with exemption 6(c): copper alloy containing up to 4% lead by weight |
| <b>China RoHs - EFUP</b>     | 50   |
| <b>REACH SVHC substances</b> | Yes<br>Lead  |
| <b>SCIP number</b>           | B008b8e4-629e-4e70-ab7d-b3b67464925d   |

## Approvals / Standards

|                       |         |
|-----------------------|---------|
| <b>Certifications</b> | DNV, BV |
| <b>UL</b>             | ECBT2   |
| <b>cUL</b>            | ECBT8   |

## General ordering information

|                   |               |
|-------------------|---------------|
| <b>EAN13 code</b> | 8015747266529 |
| <b>eCl@ss 8.1</b> | 27440206      |
| <b>ETIM 7.0</b>   | EC002312      |

## Packaging Information

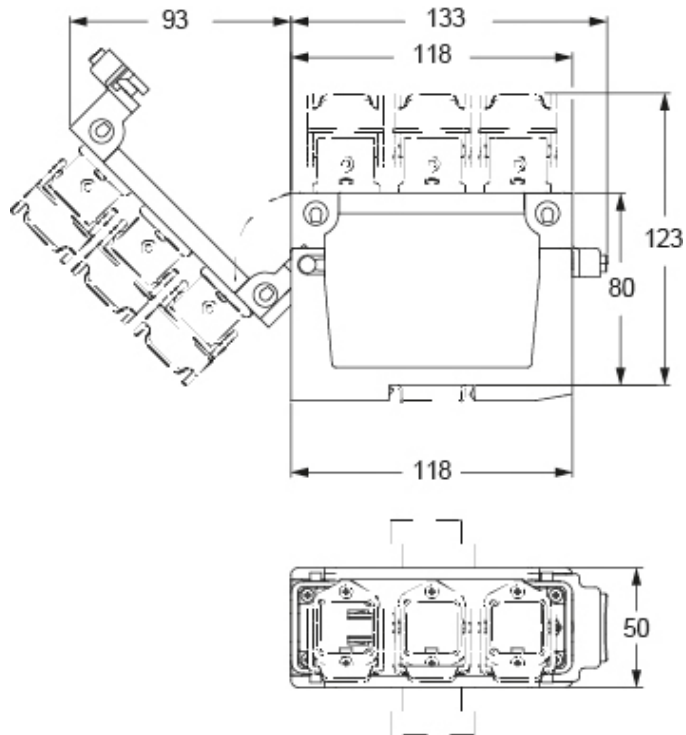
|                                  |                       |
|----------------------------------|-----------------------|
| <b>Packaging length</b>          | 330,00 mm             |
| <b>Packaging height</b>          | 170,00 mm             |
| <b>Packaging width</b>           | 230,00 mm             |
| <b>Packaging weight</b>          | 1,39 kg               |
| <b>Packaging volume</b>          | 12,90 dm <sup>3</sup> |
| <b>Packaging description</b>     | Carton box            |
| <b>Packaging quantity</b>        | 10 Pcs                |
| <b>Packaging EAN code</b>        | 8015747266536         |
| <b>Sub-packaging weight</b>      | 0,14 kg               |
| <b>Sub-packaging description</b> | Plastic bag           |
| <b>Sub-packaging quantity</b>    | 1 Pcs                 |
| <b>Sub-packaging EAN barcode</b> | 8015747266543         |

Part number

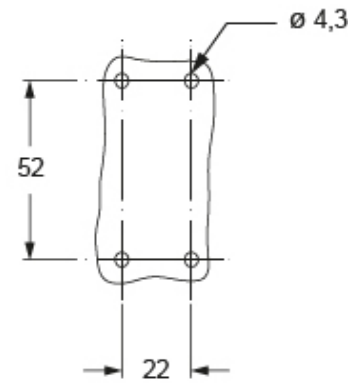
# COB 03/3 BC



Catalogue drawings



Catalogue drawings



Notes