

Part number

# CHPR 48 LS



Surface mounting housing, 180 °C series, with 1 lever, Pg36 cable entry, size "104.62", with metal cover

## Product description

<b>Product type</b>	Surface mounting housing
<b>Series</b>	180 °C
<b>Closing type</b>	With 1 lever
<b>Size</b>	Size 104.62
<b>Cable entry</b>	With cable entry Pg36
<b>Specification</b>	With metal cover

## Technical data

<b>IP degree of protection</b>	IP65
--------------------------------	------

## Further technical details

<b>Weight</b>	1.278,00 g
<b>Operating temperature range (min, max)</b>	-40°C ... +180°C

## Material properties

<b>RoHS conformity</b>	Compliant
<b>China RoHS - EFUP</b>	E
<b>REACH SVHC substances</b>	No
<b>Approvals / Standards</b>	
<b>Certifications</b>	DNV, BV
<b>UL</b>	ECBT2
<b>cUL</b>	ECBT8

## General ordering information

<b>EAN13 code</b>	8015747023382
<b>eCl@ss 8.1</b>	27440202
<b>ETIM 7.0</b>	EC000437

## Packaging Information

<b>Packaging length</b>	305,00 mm
<b>Packaging height</b>	180,00 mm
<b>Packaging width</b>	275,00 mm
<b>Packaging weight</b>	5,21 kg
<b>Packaging volume</b>	15,10 dm <sup>3</sup>
<b>Packaging description</b>	Carton box
<b>Packaging quantity</b>	4 Pcs
<b>Packaging EAN code</b>	8015747211499
<b>Sub-packaging weight</b>	1,30 kg
<b>Sub-packaging description</b>	Plastic packaging
<b>Sub-packaging quantity</b>	1 Pcs
<b>Sub-packaging EAN barcode</b>	8015747023399

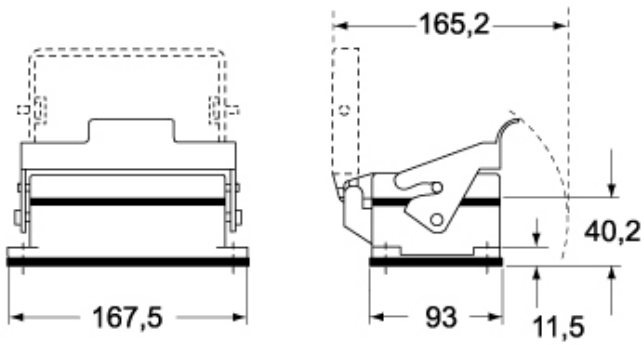
Part number

# CHPR 48 LS

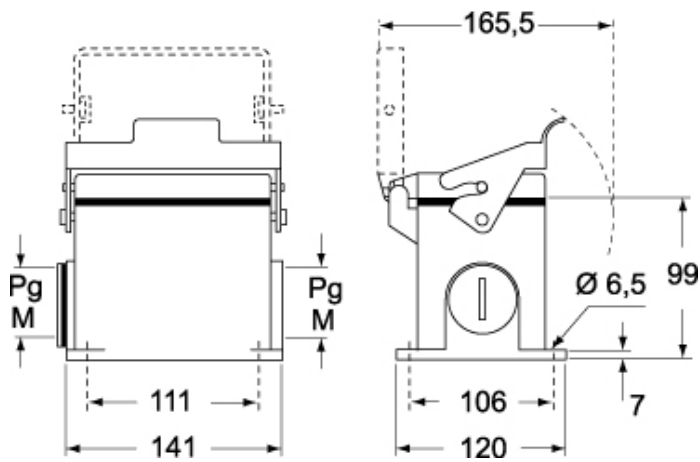


Catalogue drawings

## CHIR LS



## CHPR LS - MHPR LS



Notes