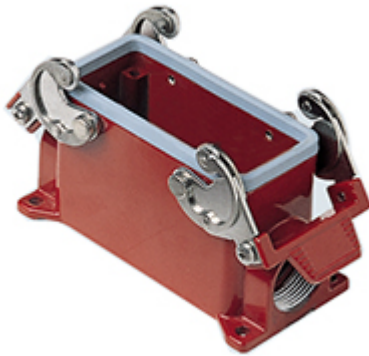


Part number

CHPR 16



Surface mounting housing, 180 °C series, with 2 levers, Pg21 cable entry, size "77.27"

Product description		Material properties	
Product type	Surface mounting housing	RoHs conformity	Compliant
Series	180 °C	China RoHs - EFUP	E
Closing type	With 2 levers	REACH SVHC substances	No
Size	Size 77.27	Approvals / Standards	
Cable entry	With cable entry Pg21	Certifications	DNV, BV
Technical data		UL	ECBT2
IP degree of protection	IP65 / IP66 / IP69	cUL	ECBT8
Further technical details		General ordering information	
Weight	365,00 g	EAN13 code	8015747023344
Operating temperature range (min, max)	-40°C ... +180°C	eCl@ss 8.1	27440202
		ETIM 7.0	EC000437
		Packaging Information	
		Packaging length	475,00 mm
		Packaging height	180,00 mm
		Packaging width	175,00 mm
		Packaging weight	3,90 kg
		Packaging volume	14,96 dm ³
		Packaging description	Carton box
		Packaging quantity	10 Pcs
		Packaging EAN code	8015747248037
		Sub-packaging weight	1,95 kg
		Sub-packaging description	Plastic packaging
		Sub-packaging quantity	5 Pcs
		Sub-packaging EAN barcode	8015747248020

Part number

CHPR 16



Notes