

Part number  
**CGI 10**



Bulkhead mounting housing, IP68 series, for 2 screws, size "57.27"

<b>Product description</b>		<b>Material properties</b>	
<b>Product type</b>	Bulkhead mounting housing	<b>Main material</b>	Aluminium die-cast
<b>Series</b>	IP68	<b>Other materials</b>	Gasket: NBR
<b>Closing type</b>	With 2 screws	<b>Colour</b>	RAL 9005 black
<b>Size</b>	Size 57.27	<b>RoHs conformity</b>	Compliant
<b>Cable entry</b>	Without cable entry	<b>China RoHs - EFUP</b>	E
<b>Technical data</b>		<b>REACH SVHC substances</b>	No
<b>IP degree of protection</b>	IP66 / IP68 / IP69	<b>Approvals / Standards</b>	
<b>Further technical details</b>		<b>Certifications</b>	DNV, BV
<b>Weight</b>	140,50 g	<b>UL</b>	ECBT2
<b>Operating temperature range (min, max)</b>	-40°C...+125°C	<b>cUL</b>	ECBT8
		<b>General ordering information</b>	
		<b>EAN13 code</b>	8015747141147
		<b>eCl@ss 8.1</b>	27440202
		<b>ETIM 7.0</b>	EC000437
		<b>Packaging Information</b>	
		<b>Packaging length</b>	230,00 mm
		<b>Packaging height</b>	110,00 mm
		<b>Packaging width</b>	180,00 mm
		<b>Packaging weight</b>	1,73 kg
		<b>Packaging volume</b>	4,55 dm <sup>3</sup>
		<b>Packaging description</b>	Carton box
		<b>Packaging quantity</b>	10 Pcs
		<b>Packaging EAN code</b>	8015747299985
		<b>Sub-packaging length</b>	167,00 mm
		<b>Sub-packaging height</b>	21,00 mm
		<b>Sub-packaging width</b>	60,00 mm
		<b>Sub-packaging weight</b>	0,17 kg
		<b>Sub-packaging volume</b>	0,21 dm <sup>3</sup>
		<b>Sub-packaging description</b>	Carton tray
		<b>Sub-packaging quantity</b>	1 Pcs
		<b>Sub-packaging EAN barcode</b>	8015747141468

Part number

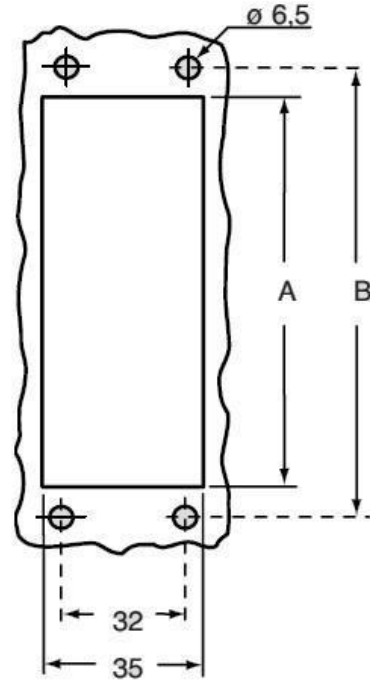
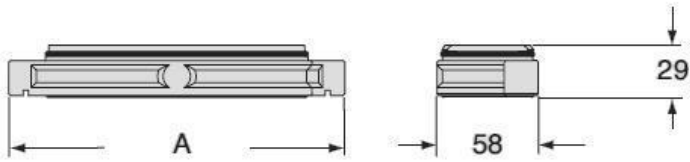
# CGI 10



Catalogue drawings

Catalogue drawings

## CGI



	<b>A</b>
CGI 06	133
CGI 10	146
CGI 16	166
CGI 24	193

	<b>A</b>	<b>B</b>
CGI 06 B	52	70
CGI 10 B	65	83
CGI 16 B	86	103
CGI 24 B	112	130

Notes