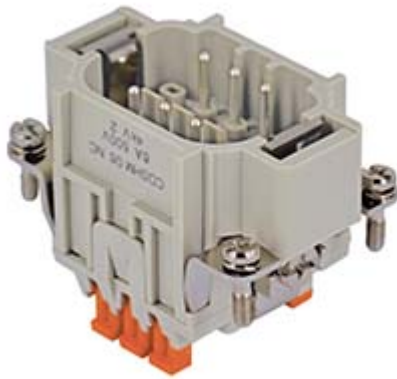


Part number

CDSHM 06 NC



Male insert, CDSH NC series, SQUICH® spring terminal connection without tools, 6 poles + PE, 6 A 250 V 6 kV 3, size "44.27", with AutoShort NC contact element

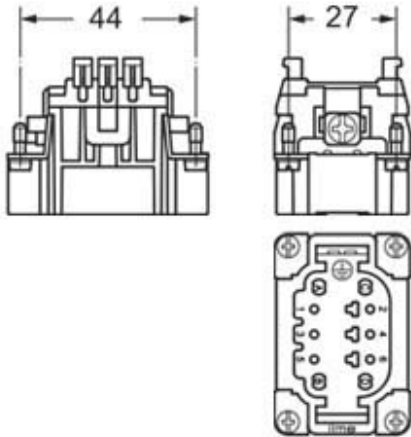
Product description		Material properties	
Product type	Insert	Main material	Polycarbonate (PC)
Series	CDSH NC	Other materials	Contacts: copper alloy
Connection type	SQUICH® spring terminal connection without tools	Colour	RAL 7032 grey
Gender	Male	RoHs conformity	Compliant with exemption 6(c); copper alloy containing up to 4% lead by weight
N. of poles	6 poles +	China RoHs - EFUP	50
Size	Size 44.27	REACH SVHC substances	Yes Lead
Specification	With AutoShort NC contact element	SCIP number	1a9c93ff-0445-4a16-81e3-1609ac5274d6
Technical data		Approvals / Standards	
Current	6 A	Reference standard	EN 61984:2009-06
Voltage	250 V	Certifications	DNV, BV, EAC
Rated impulse withstand voltage	6 kV	UL	ECBT2
Pollution degree	3	cUL	ECBT8
Rated voltage according to UL/CSA	600 V	General ordering information	
Wire cross-section	0,14 mm ² - 2,50 mm ²	EAN13 code	8015747218290
AWG size	26 - 14	eCl@ss 8.1	27440205
Contact type	Turned silver plated	ETIM 7.0	EC000438
IP degree of protection	IP20 without enclosure, IP65/IP66/IP68/IP69 with enclosure	Packaging Information	
Further technical details		Packaging length	245,00 mm
Mating cycles	≥ 500	Packaging height	165,00 mm
Insulation resistance	≥ 10 GΩ	Packaging width	215,00 mm
Contact resistance	≤ 3 mΩ	Packaging weight	3,19 kg
Weight	46,67 g	Packaging volume	8,69 dm ³
Operating temperature range (min, max)	-40 °C ... +125 °C	Packaging description	Carton box
UL 94 flammability rating	V-0	Packaging quantity	60 Pcs
		Packaging EAN code	8015747220026
		Sub-packaging length	197,00 mm
		Sub-packaging height	44,00 mm
		Sub-packaging width	113,00 mm
		Sub-packaging weight	0,53 kg
		Sub-packaging volume	0,98 dm ³
		Sub-packaging description	Carton tray
		Sub-packaging quantity	10 Pcs
		Sub-packaging EAN barcode	8015747220064

Part number

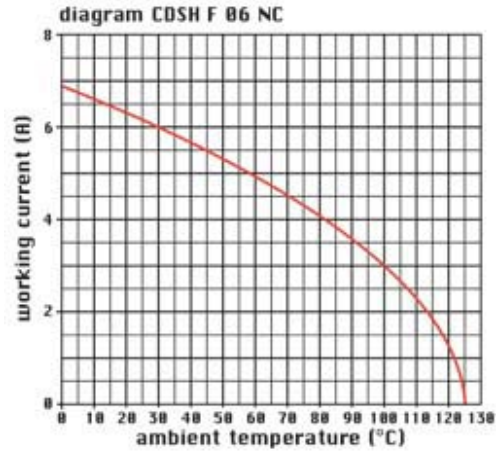
CDSHM 06 NC



Catalogue drawings



Derating curves



Notes

California Proposition 65 Information



WARNING

This product can expose you to lead and its compounds, known to the State of California to cause cancer and/or reproductive toxicity. For more information go to www.P65Warnings.ca.gov.

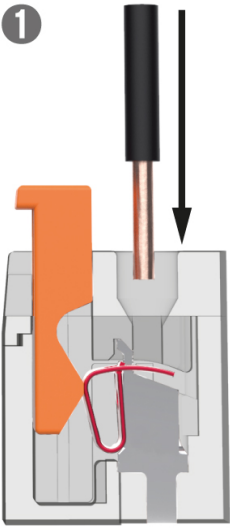
California Proposition 65 Information



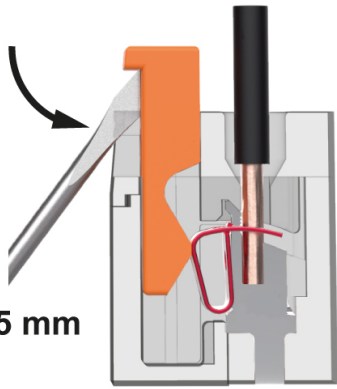
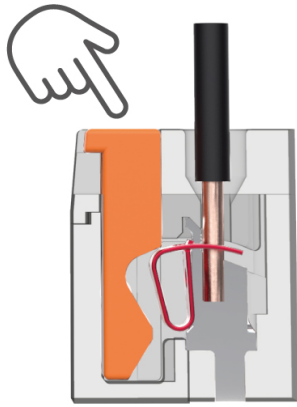
WARNING

This product can expose you to lead and its compounds, known to the State of California to cause cancer and/or reproductive toxicity. For more information go to www.P65Warnings.ca.gov.

1



2



0,5 x 3,5 mm

