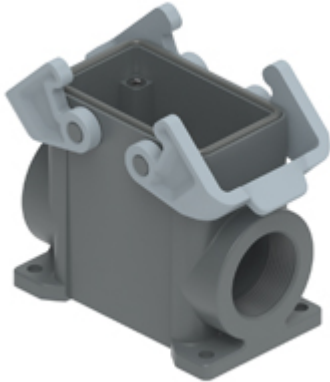


Part number

# TMAP10.225B



Surface mounting housing, T-TYPE series, with 2 levers, M25 cable entry, size "57.27", with integrated protective PE jumpers

Product description	
<b>Product type</b>	Surface mounting housing
<b>Series</b>	T-TYPE
<b>Closing type</b>	With 2 levers
<b>Size</b>	Size 57.27
<b>Cable entry</b>	With cable entry M25 x 2
<b>Specification</b>	With integrated protective PE jumpers
Technical data	
<b>IP degree of protection</b>	IP65
Further technical details	
<b>Weight</b>	174,00 g
<b>Operating temperature range (min, max)</b>	-40°C ... +90°C

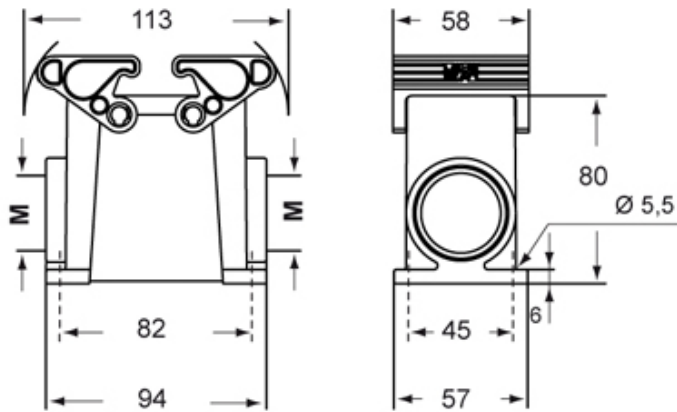
Material properties	
<b>Main material</b>	Polypropylene (PP)
<b>Other materials</b>	Lever: Polyamide (PA) Gasket: polyurethane (PUR) PE jumpers: galvanized brass
<b>Colour</b>	RAL 7012 grey, RAL 7001 grey
<b>RoHs conformity</b>	Compliant
<b>China RoHs - EFUP</b>	E
<b>REACH SVHC substances</b>	No
Approvals / Standards	
<b>UL</b>	ECBT2
<b>cUL</b>	ECBT8
General ordering information	
<b>EAN13 code</b>	8015747277280
Packaging Information	
<b>Packaging length</b>	310,00 mm
<b>Packaging height</b>	220,00 mm
<b>Packaging width</b>	240,00 mm
<b>Packaging weight</b>	3,80 kg
<b>Packaging volume</b>	16,37 dm <sup>3</sup>
<b>Packaging description</b>	Carton box
<b>Packaging quantity</b>	20 Pcs
<b>Packaging EAN code</b>	8015747180627
<b>Sub-packaging weight</b>	0,95 kg
<b>Sub-packaging description</b>	Plastic packaging
<b>Sub-packaging quantity</b>	5 Pcs
<b>Sub-packaging EAN barcode</b>	8015747180894

Part number

# TMAP10.225B



Catalogue drawings



## Notes

Dimensions shown in mm are not binding and may be changed without notice.