


Part number

TM 6393 IS



Interlocked switched socket-outlet, TM series, 2 poles + PE, 9 h (red), 63 A, 380 ÷ 415 V, sectionable fuse carrier 22 x 58 mm, with base box

Product description	
Product type	Interlocked switched socket-outlet
Series	TM.. IS/KIS
N. of poles	2 poles + 
Clock position	9
Size	145 x 565 x 18 mm
Specification	Sectionable fuse carrier 22 x 58 mm With base box
Technical data	
Current	63 A
Voltage	380 ÷ 415 V
IP degree of protection	IP66 / IP67
Further technical details	
Operating temperature range (min, max)	-25°C ... +40°C
UL 94 flammability rating	V-0 (insert), V-2 (enclosure)
IK rating (impact degree of protection)	IK10

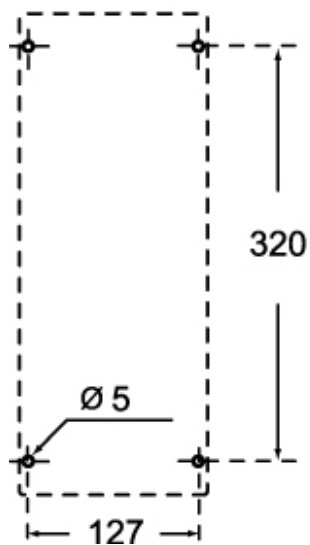
Material properties	
Colour	RAL 7012 grey, RAL 3000 red
Approvals / Standards	
Reference standard	EN 60309-1, -2 e -4
General ordering information	
EAN13 code	8015747092791
Packaging Information	
Sub-packaging description	Carton box
Sub-packaging quantity	1 Pcs
Sub-packaging EAN barcode	8015747108928

Part number

TM 6393 IS



Catalogue drawings



Notes

Dimensions shown in mm are not binding and may be changed without notice.