


Part number

# TM 6393 IR



Interlocked switched socket-outlet, TM series, 2 poles + PE, 9 h (red), 63 A, 380 ÷ 415 V, with compartment for modular units, 6 DIN-rail modules EN 60715, with base box

Product description	
<b>Product type</b>	Interlocked switched socket-outlet
<b>Series</b>	TM..IR/KIR
<b>N. of poles</b>	2 poles + 
<b>Clock position</b>	9
<b>Size</b>	145 x 565 x 18 mm
<b>Specification</b>	With compartment for modular units, 6 DIN-rail modules EN 60715 With base box
Technical data	
<b>Current</b>	63 A
<b>Voltage</b>	380 ÷ 415 V
<b>IP degree of protection</b>	IP66 / IP67
Further technical details	
<b>Weight</b>	3.300,00 g
<b>Operating temperature range (min, max)</b>	-25°C ... +40°C
<b>UL 94 flammability rating</b>	V-0 (insert), V-2 (enclosure)
<b>IK rating (impact degree of protection)</b>	IK10

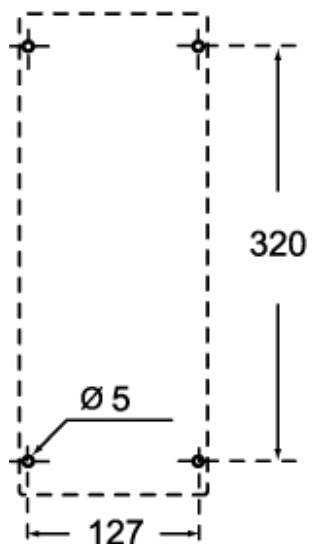
Material properties	
<b>Colour</b>	RAL 7012 grey, RAL 3000 red
Approvals / Standards	
<b>Reference standard</b>	EN 60309-1, -2 e -4
General ordering information	
<b>EAN13 code</b>	8015747092784
Packaging Information	
<b>Sub-packaging weight</b>	3,30 kg
<b>Sub-packaging description</b>	Carton box
<b>Sub-packaging quantity</b>	1 Pcs
<b>Sub-packaging EAN barcode</b>	8015747108911

Part number

# TM 6393 IR



## Catalogue drawings



## Notes

Dimensions shown in mm are not binding and may be changed without notice.