


Part number

# TM 6375 IR



Interlocked switched socket-outlet, TM series, 3 poles + N + PE, 7 h (black), 63 A, 480 ÷ 500 V, with compartment for modular units, 6 DIN-rail modules EN 60715, with base box

#### Product description

<b>Product type</b>	Interlocked switched socket-outlet
<b>Series</b>	TM..IR/KIR
<b>N. of poles</b>	3 poles + N + 
<b>Clock position</b>	7
<b>Specification</b>	With compartment for modular units, 6 DIN-rail modules EN 60715 With base box

#### Technical data

<b>Current</b>	63 A
<b>Voltage</b>	480 ÷ 500 V
<b>IP degree of protection</b>	IP66 / IP67
<b>Further technical details</b>	
<b>Weight</b>	3.530,00 g
<b>Operating temperature range (min, max)</b>	-25°C ... +40°C
<b>UL 94 flammability rating</b>	V-0 (insert), V-2 (enclosure)
<b>IK rating (impact degree of protection)</b>	IK10

#### Material properties

<b>Colour</b>	RAL 7012 grey, RAL 9005 black
<b>RoHs conformity</b>	Compliant with exemption 6(c): copper alloy containing up to 4% lead by weight
<b>China RoHs - EFUP</b>	50
<b>REACH SVHC substances</b>	Yes Lead
<b>SCIP number</b>	F6799547-ab84-42f2-938f-233ba663766d

#### Approvals / Standards

<b>Reference standard</b>	EN 60309-1, -2 e -4
---------------------------	---------------------

#### General ordering information

<b>EAN13 code</b>	8015747092753
-------------------	---------------

#### Packaging Information

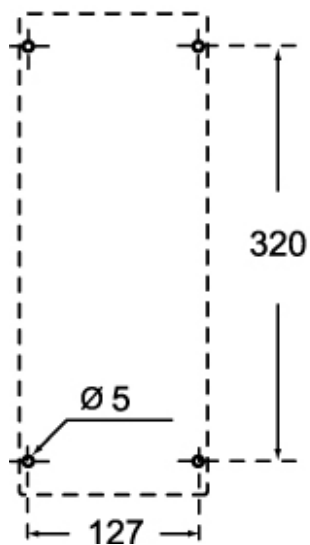
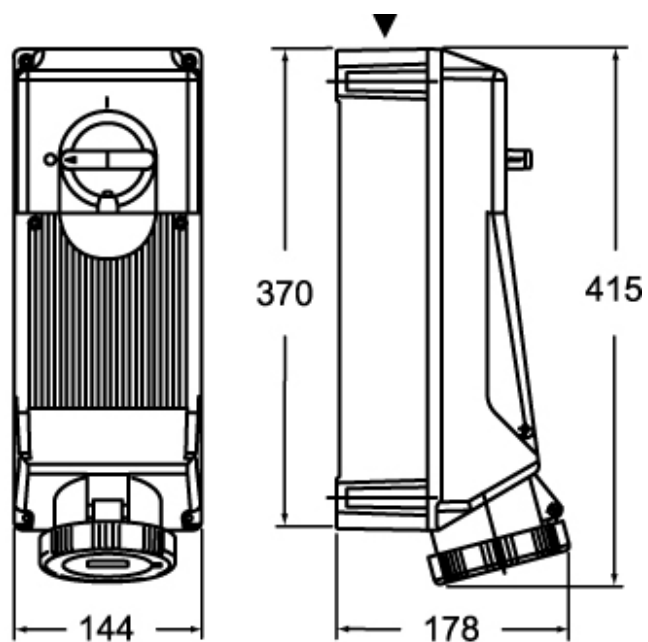
<b>Sub-packaging length</b>	150,00 mm
<b>Sub-packaging height</b>	188,00 mm
<b>Sub-packaging width</b>	430,00 mm
<b>Sub-packaging weight</b>	3,53 kg
<b>Sub-packaging volume</b>	12,13 dm <sup>3</sup>
<b>Sub-packaging description</b>	Carton box
<b>Sub-packaging quantity</b>	1 Pcs
<b>Sub-packaging EAN barcode</b>	8015747105644

Part number

# TM 6375 IR



## Catalogue drawings



## Notes

Dimensions shown in mm are not binding and may be changed without notice.