


Part number

TM 3235 SP



Interlocked switched socket-outlet, TM series,
3 poles + N + PE, 3 h (red), 32 A, 380 ÷ 380
V, without fuse-carrier, with base box

Product description

Product type	Interlocked switched socket-outlet
Series	TM..SP/KSP
N. of poles	3 poles + N + 
Clock position	3
Specification	Without fuse-carrier With base box

Technical data

Current	32 A
Voltage	380V (50Hz.) 440V (60Hz.)
IP degree of protection	IP66 / IP67

Further technical details

Operating temperature range (min, max)	-25°C ... +40°C
UL 94 flammability rating	V-2
IK rating (impact degree of protection)	IK10

Material properties

Colour	RAL 7012 grey, RAL 3000 red
---------------	-----------------------------

Approvals / Standards

Reference standard	EN 60309-1, -2 e -4
---------------------------	---------------------

General ordering information

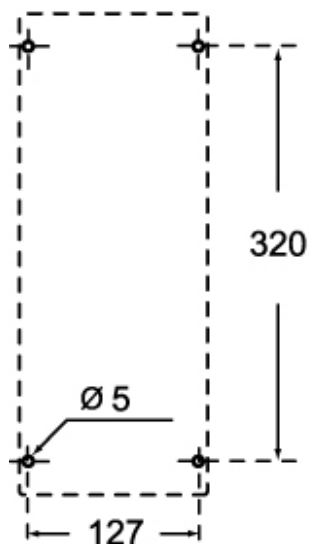
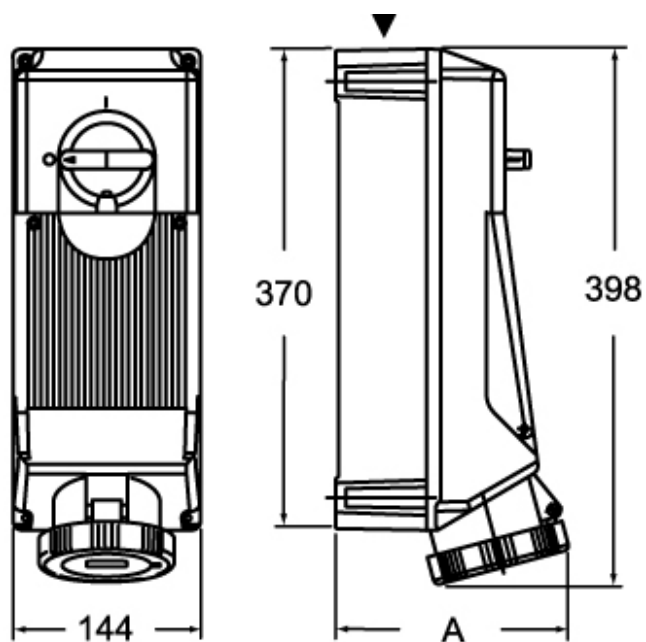
EAN13 code	8015747162906
-------------------	---------------

Part number

TM 3235 SP



Catalogue drawings



	A
2P+⊕	162
3P+⊕	162
3P+N+⊕	169

Notes

Dimensions shown in mm are not binding and may be changed without notice.