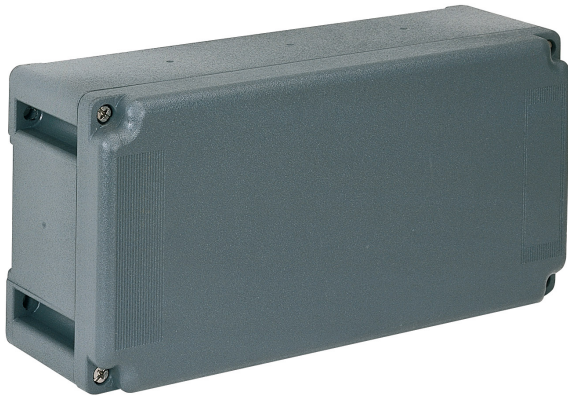


Part number

TM 2614 DB



Box, TM series, with fixed cover, for 1 TM 1145 TB plate + 1 TM 1456 TB plate

Product description

Product type	Box
Series	TM
Specification	With fixed cover For 1 TM 1145 TB plate + 1 TM 1456 TB plate

Technical data

IP degree of protection	IP66 / IP67
Further technical details	
Weight	710,00 g
Operating temperature range (min, max)	-25°C ... +40°C
IK rating (impact degree of protection)	IK10

Material properties

Colour	RAL 7012 grey
RoHs conformity	Compliant with exemption 6(c): copper alloy containing up to 4% lead by weight
China RoHs - EFUP	50
REACH SVHC substances	Yes Lead
SCIP number	B0214dad-d2d9-4e91-a5b4-f4c9b4612083

General ordering information

EAN13 code	8015747101424
-------------------	---------------



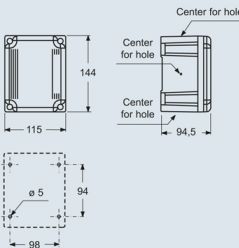
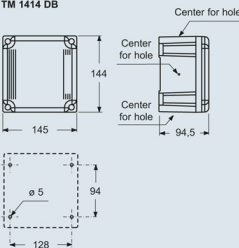
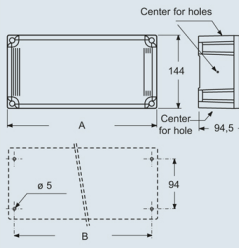
Packaging Information

Packaging length	270,00 mm
Packaging height	185,00 mm
Packaging width	210,00 mm
Packaging weight	1,42 kg
Packaging volume	10,49 dm ³
Packaging description	Carton box
Packaging quantity	2 Pcs
Packaging EAN code	8015747101622
Sub-packaging weight	0,71 kg
Sub-packaging description	Plastic packaging
Sub-packaging quantity	1 Pcs
Sub-packaging EAN barcode	8015747101639

Part number TM 2614 DB



Catalogue drawings

TM complementary parts and accessories for groups													
<ul style="list-style-type: none"> ● Compliant with international standard IEC 60670 (Italian standard CEI 23-48) ● In insulating self-extinguishing thermoplastic material RAL 7012 grey ● Junction boxes suitable for the assembly of fixing plates or DIN-rail ● Fixing plates in zinc-plated steel with fixing screws ● Blind plug-type, fixed cover ● With Italian Quality Mark (CEI 23-48) 	<p>Junction boxes - IP66/IP67</p> 	<p>Junction boxes - IP66/IP67</p> 											
<p>Description</p> <p>For TM 1145 TB plate - IP66/67 degree of protection (EN 60529) For TM 1456 TB plate - IP66/67 degree of protection (EN 60529)</p> <p>For 2 TM 1145 TB plates - IP66/67 degree of protection (EN 60529) For 1 TM 1145 TB plate + 1 TM 1456 TB plate - IP66/67 degree of protection (EN 60529) For 2 TM 1456 TB plates - IP66/67 degree of protection (EN 60529)</p>	<p>Part No.</p> <p>TM 1114 DB ☉ TM 1414 DB ☉</p>	<p>Part No.</p> <p>TM 2314 DB ☉ TM 2614 DB ☉ TM 2914 DB ☉</p>											
<p>dimensions in mm</p> <p>TM 1114 DB</p>  <p>TM 1414 DB</p> 	<p>dimensions in mm</p> <p>TM ... DB</p>  <table border="1" style="margin-top: 20px;"> <thead> <tr> <th>Part No.</th> <th>A</th> <th>B</th> </tr> </thead> <tbody> <tr> <td>TM 2314 DB</td> <td>230</td> <td>213</td> </tr> <tr> <td>TM 2614 DB</td> <td>280</td> <td>243</td> </tr> <tr> <td>TM 2914 DB</td> <td>290</td> <td>273</td> </tr> </tbody> </table>	Part No.	A	B	TM 2314 DB	230	213	TM 2614 DB	280	243	TM 2914 DB	290	273
Part No.	A	B											
TM 2314 DB	230	213											
TM 2614 DB	280	243											
TM 2914 DB	290	273											
<p>Dimensions indicated are not binding and may be changed without prior notice.</p>													

Notes

Dimensions shown in mm are not binding and may be changed without notice.