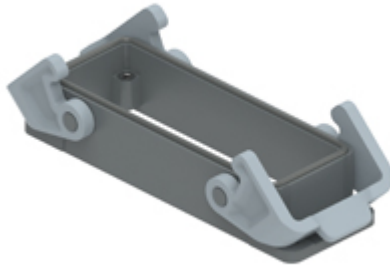


Part number
TCHI 24



Bulkhead mounting housing, T-TYPE series,
 with 2 levers, size "104.27"

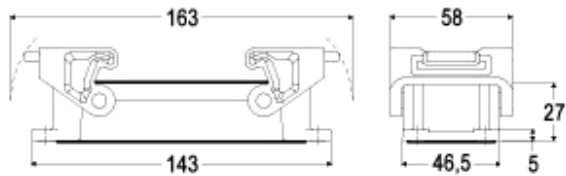
| | | | |
|---|---------------------------|-------------------------------------|---|
| Product description | | Material properties | |
| Product type | Bulkhead mounting housing | Main material | Polypropylene (PP) |
| Series | T-TYPE | Other materials | Lever: Polyamide (PA) Gasket: polyurethane (PUR) |
| Closing type | With 2 levers | Colour | RAL 7012 grey, RAL 7001 grey |
| Size | Size 104.27 | RoHs conformity | Compliant |
| Cable entry | Without cable entry | China RoHs - EFUP | E |
| Technical data | | REACH SVHC substances | No |
| IP degree of protection | IP65 | Approvals / Standards | |
| Further technical details | | UL | ECBT2 |
| Weight | 99,00 g | cUL | ECBT8 |
| Operating temperature range (min, max) | -40°C ... +90°C | General ordering information | |
| | | EAN13 code | 8015747168564 |
| | | eCl@ss 8.1 | 27440202 |
| | | ETIM 7.0 | EC000437 |
| | | Packaging Information | |
| | | Packaging length | 365,00 mm |
| | | Packaging height | 195,00 mm |
| | | Packaging width | 305,00 mm |
| | | Packaging weight | 4,06 kg |
| | | Packaging volume | 21,71 dm ³ |
| | | Packaging description | Carton box |
| | | Packaging quantity | 40 Pcs |
| | | Packaging EAN code | 8015747170185 |
| | | Sub-packaging weight | 0,51 kg |
| | | Sub-packaging description | Plastic packaging |
| | | Sub-packaging quantity | 5 Pcs |
| | | Sub-packaging EAN barcode | 8015747170192 |

Part number

TCHI 24



Catalogue drawings



Notes

Dimensions shown in mm are not binding and may be changed without notice.
