

Part number

TAPW 06L25B



Surface mounting housing, T-TYPE /W series, with 1 lever, M25 cable entry, size "44.27", with integrated protective PE jumpers

| Product description | |
|---|---------------------------------------|
| Product type | Surface mounting housing |
| Series | T-TYPE /W |
| Closing type | With 1 lever |
| Size | Size 44.27 |
| Cable entry | With cable entry M25 |
| Specification | With integrated protective PE jumpers |
| Technical data | |
| IP degree of protection | IP66 / IP69 |
| Further technical details | |
| Weight | 0,50 g |
| Operating temperature range (min, max) | -40°C ... +90°C |

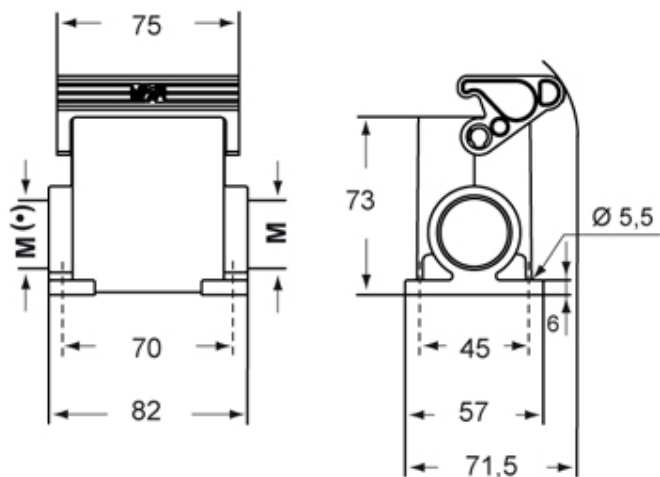
| Material properties | |
|----------------------------------|--|
| Main material | Polypropylene (PP) |
| Other materials | Lever: Polyamide (PA) Gasket: FKM PE jumpers: galvanized brass |
| Colour | RAL 7012 grey, RAL 7001 grey |
| RoHs conformity | Compliant |
| China RoHs - EFUP | E |
| REACH SVHC substances | No |
| Approvals / Standards | |
| UL | ECBT2 |
| cUL | ECBT8 |
| General ordering information | |
| EAN13 code | 8015747277662 |
| Packaging Information | |
| Packaging length | 180,00 mm |
| Packaging height | 210,00 mm |
| Packaging width | 330,00 mm |
| Packaging volume | 12,47 dm ³ |
| Packaging description | Carton box |
| Packaging quantity | 20 Pcs |
| Packaging EAN code | 8015747299435 |
| Sub-packaging description | Plastic packaging |
| Sub-packaging quantity | 5 Pcs |
| Sub-packaging EAN barcode | 8015747299442 |

Part number

TAPW 06L25B



Catalogue drawings



Notes

Dimensions shown in mm are not binding and may be changed without notice.