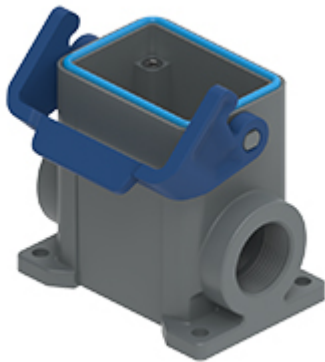


Part number

TAPC 06 L32



Surface mounting housing, T-TYPE/C series,
with 1 lever, M32 cable entry, size "44.27"

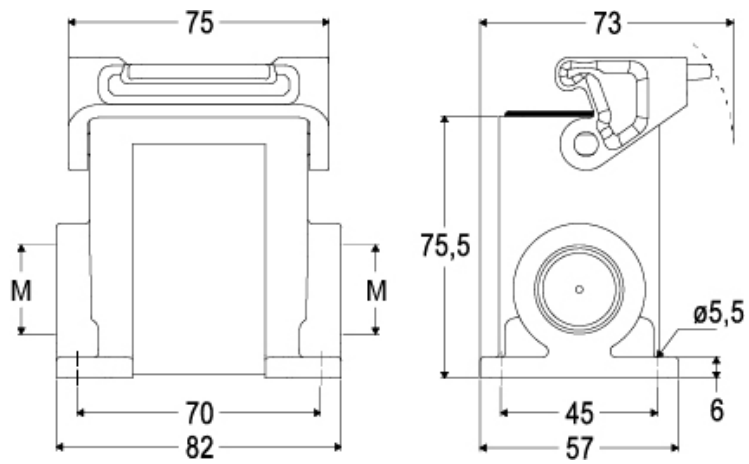
| Product description | | Material properties | |
|---|--------------------------|----------------------------------|--|
| Product type | Surface mounting housing | Main material | Polypropylene (PP) |
| Series | T-TYPE/C | Other materials | Lever: Polypropylene (PP) Gasket: Silicone rubber |
| Closing type | With 1 lever | Colour | RAL 7012 grey, RAL 5005 blue |
| Size | Size 44.27 | RoHS conformity | Compliant |
| Cable entry | With cable entry M32 | China RoHS - EFUP | E |
| Technical data | | REACH SVHC substances | No |
| IP degree of protection | IP66 / IP69 | General ordering information | |
| Further technical details | | EAN13 code | 8015747211932 |
| Weight | 130,00 g | eCl@ss 8.1 | 27440202 |
| Operating temperature range (min, max) | -50°C ... +70°C | ETIM 7.0 | EC000437 |
| | | Packaging Information | |
| | | Packaging length | 180,00 mm |
| | | Packaging height | 210,00 mm |
| | | Packaging width | 330,00 mm |
| | | Packaging weight | 2,90 kg |
| | | Packaging volume | 12,47 dm ³ |
| | | Packaging description | Carton box |
| | | Packaging quantity | 20 Pcs |
| | | Packaging EAN code | 8015747212021 |
| | | Sub-packaging weight | 0,73 kg |
| | | Sub-packaging description | Plastic packaging |
| | | Sub-packaging quantity | 5 Pcs |
| | | Sub-packaging EAN barcode | 8015747212038 |

Part number

TAPC 06 L32



Catalogue drawings



Notes

Dimensions shown in mm are not binding and may be changed without notice.