


Part number

SQE 3245



Interlocked switched socket-outlet, SQE series, 3 poles + N + PE, 4 h (yellow), 32 A, 57/100 ÷ 75/130 V, without fuse-carrier

Product description	
Product type	Interlocked switched socket-outlet
Series	SQE
N. of poles	3 poles + N + 
Clock position	4
Size	Socket fixing centre distance 88 x 230 mm
Specification	Without fuse-carrier
Technical data	
Current	32 A
Voltage	57/100 ÷ 75/130 V
IP degree of protection	IP44
Further technical details	
Weight	630,00 g
Operating temperature range (min, max)	-25°C ... +40°C
IK rating (impact degree of protection)	IK08

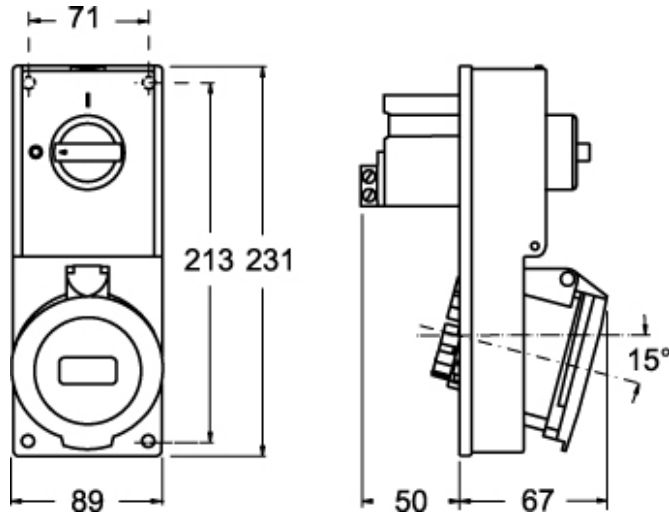
Material properties	
Colour	RAL 7035 grey, RAL 1021 yellow
Approvals / Standards	
Reference standard	EN 60309-1, -2 e -4
General ordering information	
EAN13 code	8015747086530
Packaging Information	
Sub-packaging weight	0,63 kg
Sub-packaging description	Carton box
Sub-packaging quantity	1 Pcs
Sub-packaging EAN barcode	8015747109369

Part number

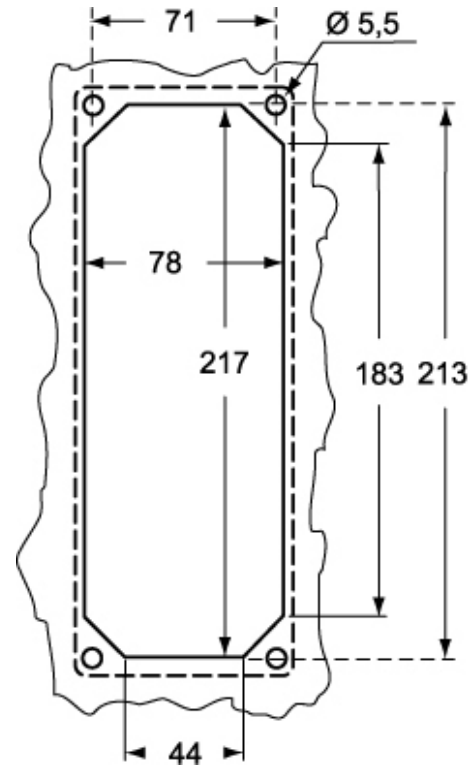
SQE 3245



Catalogue drawings



Catalogue drawings



Notes

Dimensions shown in mm are not binding and may be changed without notice.