


Part number

# SQE 32114.5



Interlocked switched socket-outlet, SQE series, 3 poles + PE, 11 h (red), 32 A, 440 ÷ 460 V, without fuse-carrier

#### Product description

<b>Product type</b>	Interlocked switched socket-outlet
<b>Series</b>	SQE
<b>N. of poles</b>	3 poles + 
<b>Clock position</b>	11
<b>Specification</b>	Without fuse-carrier

#### Technical data

<b>Current</b>	32 A
<b>Voltage</b>	440 ÷ 460 V
<b>IP degree of protection</b>	IP55

#### Further technical details

<b>Operating temperature range (min, max)</b>	-25°C ... +40°C
<b>IK rating (impact degree of protection)</b>	IK08

#### Material properties

<b>Colour</b>	RAL 7035 grey, RAL 3000 red
---------------	-----------------------------

#### Approvals / Standards

<b>Reference standard</b>	EN 60309-1, -2 e -4
---------------------------	---------------------

#### General ordering information

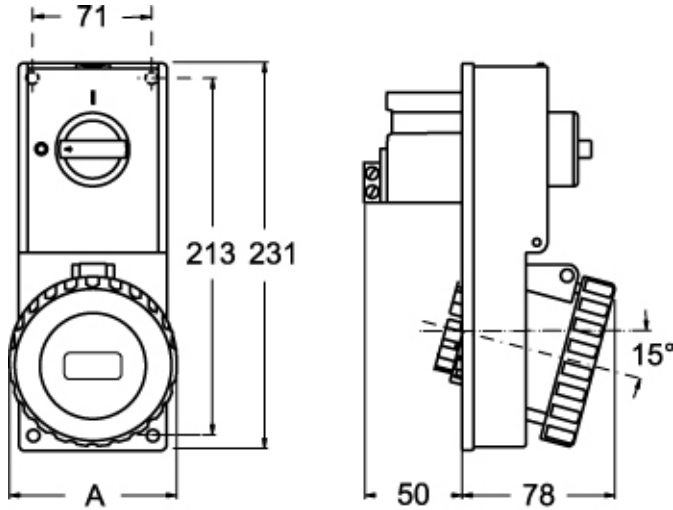
<b>EAN13 code</b>	8015747159920
-------------------	---------------

Part number

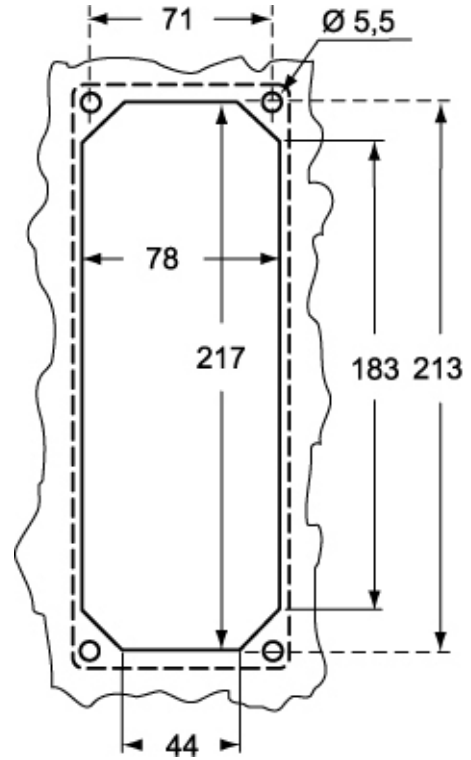
# SQE 32114.5



Catalogue drawings



Catalogue drawings



SQE.5		A
32A	2P+⊕	92
	3P+⊕	92
	3P+N+⊕	100

## Notes

Dimensions shown in mm are not binding and may be changed without notice.