


Part number

SIPW 3265 SM



Wall-mounting plug, PLUSO series, 3 poles + N + PE, 6 h (red), 32 A, 200/346 ÷ 240/415 V, with phase inverter

Product description		Material properties	
Product type	Plug Wall-mounting	Colour	RAL 7035 grey, RAL 3000 red
Series	SIPW...SM, PLUSO	RoHs conformity	Compliant with exemption 6(c): copper alloy containing up to 4% lead by weight
Connection type	Screw terminal connection	China RoHs - EFUP	50
N. of poles	3 poles + N + 	REACH SVHC substances	Yes Lead
Clock position	6	SCIP number	Ca7de37f-add8-4b77-9861-279c94903ade
Specification	With phase inverter	Approvals / Standards	
Technical data		Reference standard	EN 60309-1 and -2
Current	32 A	General ordering information	
Voltage	200/346 ÷ 240/415 V	EAN13 code	8015747084055
IP degree of protection	IP67	Packaging Information	
Further technical details		Packaging weight	3,80 kg
Weight	380,00 g	Packaging volume	36,36 dm ³
Operating temperature range (min, max)	-25°C ... +40°C	Packaging description	Carton box
		Packaging quantity	10 Pcs
		Packaging EAN code	8015747084062

Part number

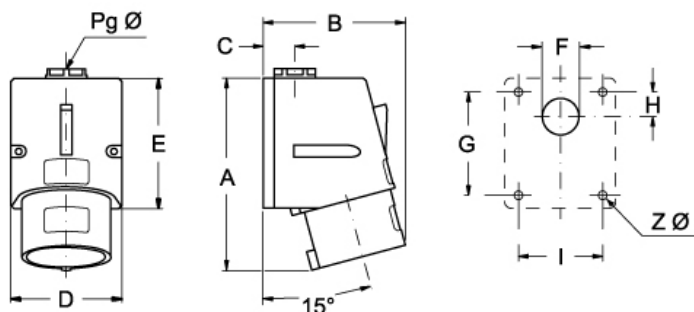
SIPW 3265 SM



Catalogue drawings

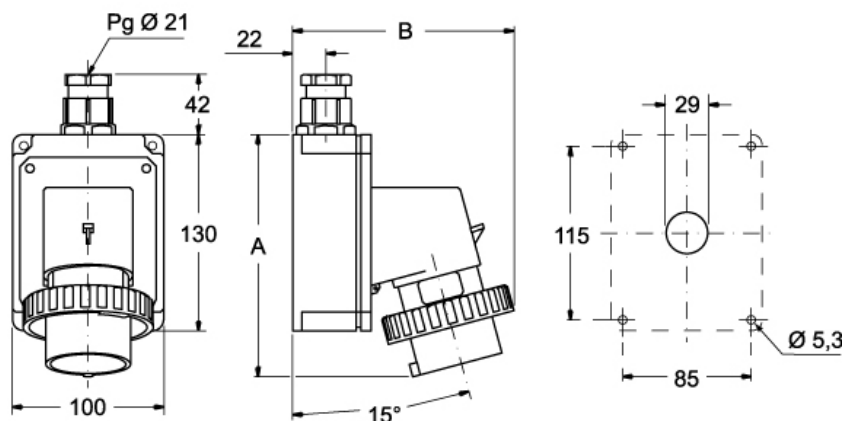
Catalogue drawings

SIP ... SM



	A	B	C	D	E	F	G	H	I	Z Ø	Pg Ø
16A	121	90	20	70	82	23	65	16	53	4,3	16
32A	147	95	24	86	104	29	79	17	61	6,3	21

SIPW ... SM



	A	B
16A	164	145
32A	178	160

Notes

Dimensions shown in mm are not binding and may be changed without notice.

- Compliant with EN 60309-1 and -2
- Enclosure and insert in insulating, thermoplastic and self-extinguishing material
- SIP... types (IP44), red enclosure (colour coded according to the

- operating voltage), entry with threaded grommet
- SIP...SV types (IP44), entry with cable gland colour coded according to the operating voltage, RAL 7035 grey colour enclosure
- SIPW... types (IP67), RAL 7035 grey enclosure, red bayonet ring (colour coded according to the operating voltage), entry with cable gland
- SIPW...SV types (IP66/IP67), entry with cable gland colour coded according to the operating voltage, RAL 7035 grey enclosure, locking ring and gasket, colour coded according to the operating

voltage, earth contact position different from h 6 on request

- Built-in phase inverter device, operated by means of a screwdriver
 - Terminals with retained screws
 - SIP/SIPW...SM/SI types: nickel-plated contacts on request
 - SIPW...SV HEAVY DUTY types: nickel-plated contacts on request
-