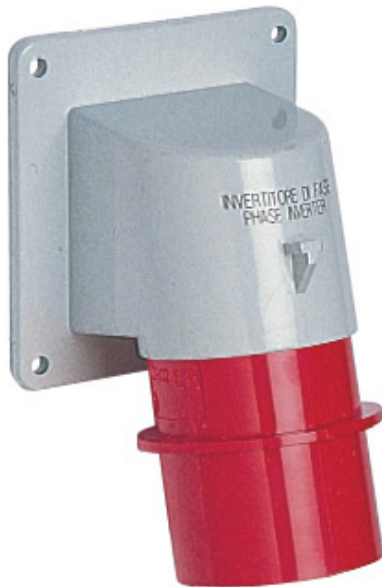



Part number

SIP 3265 SI



Flush-mounting plug, PLUSO series, 3 poles + N + PE, 6 h (red), 32 A, 200/346 ÷ 240/415 V, with phase inverter

Product description

| | |
|------------------------|---|
| Product type | Plug Flush-mounting |
| Series | SIP...SI, PLUSO |
| Connection type | Screw terminal connection |
| N. of poles | 3 poles + N +  |
| Clock position | 6 |
| Specification | With phase inverter |

Technical data

| | |
|--------------------------------|---------------------|
| Current | 32 A |
| Voltage | 200/346 ÷ 240/415 V |
| IP degree of protection | IP44 |

Further technical details

| | |
|---|-----------------|
| Weight | 270,50 g |
| Operating temperature range (min, max) | -25°C ... +40°C |

Material properties

| | |
|------------------------------|--|
| Colour | RAL 7035 grey, RAL 3000 red |
| RoHs conformity | Compliant with exemption 6(c): copper alloy containing up to 4% lead by weight |
| China RoHs - EFUP | 50 |
| REACH SVHC substances | Yes Lead |
| SCIP number | Ca7de37f-add8-4b77-9861-279c94903ade |

Approvals / Standards

| | |
|---------------------------|-------------------|
| Reference standard | EN 60309-1 and -2 |
|---------------------------|-------------------|

General ordering information

| | |
|-------------------|---------------|
| EAN13 code | 8015747083911 |
|-------------------|---------------|

Packaging Information

| | |
|------------------------------|-----------------------|
| Packaging length | 355,00 mm |
| Packaging height | 195,00 mm |
| Packaging width | 325,00 mm |
| Packaging weight | 3,22 kg |
| Packaging volume | 22,50 dm ³ |
| Packaging description | Carton box |
| Packaging quantity | 10 Pcs |
| Packaging EAN code | 8015747083928 |

Part number

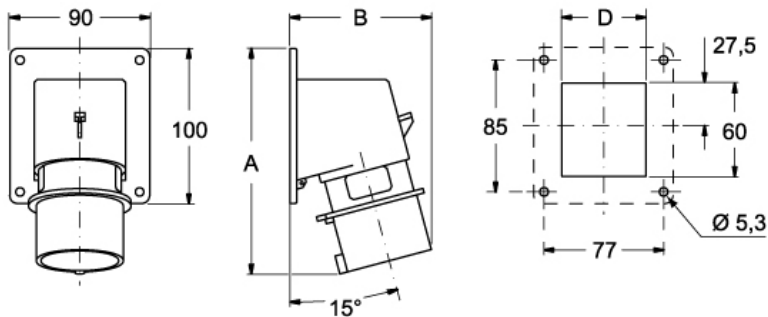
SIP 3265 SI



Catalogue drawings

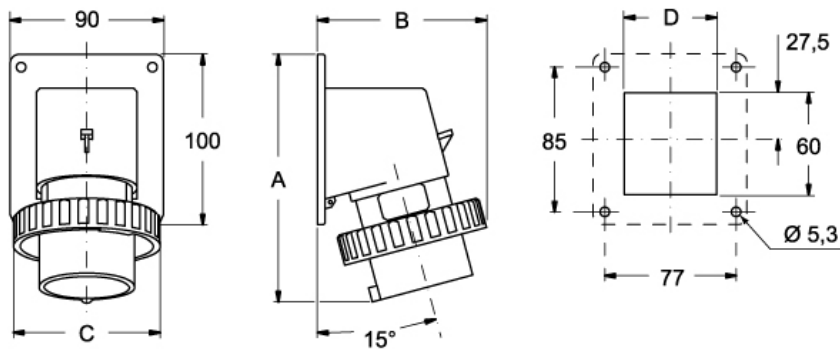
Catalogue drawings

SIP ... SI



| | A | B | C |
|------------|-----|-----|----|
| 16A | 146 | 93 | 54 |
| 32A | 160 | 106 | 62 |

SIPW ... SI



| | A | B | C | D |
|------------|-----|-----|-----|----|
| 16A | 146 | 99 | 86 | 54 |
| 32A | 160 | 113 | 100 | 62 |

Notes

Dimensions shown in mm are not binding and may be changed without notice.

- Compliant with EN 60309-1 and -2
- Enclosure and insert in insulating, thermoplastic and self-extinguishing material
- SIP... types (IP44), red enclosure (colour coded according to the operating voltage), entry with threaded grommet

- SIP...SV types (IP44), entry with cable gland colour coded according to the operating voltage, RAL 7035 grey colour enclosure
- SIPW... types (IP67), RAL 7035 grey enclosure, red bayonet ring (colour coded according to the operating voltage), entry with cable gland
- SIPW...SV types (IP66/IP67), entry with cable gland colour coded according to the operating voltage, RAL 7035 grey enclosure, locking ring and gasket, colour coded according to the operating voltage, earth contact position different from h 6 on request
- Built-in phase inverter device, operated by means of a

screwdriver

- Terminals with retained screws
 - SIP/SIPW...SM/SI types: nickel-plated contacts on request
 - SIPW...SV HEAVY DUTY types: nickel-plated contacts on request
-