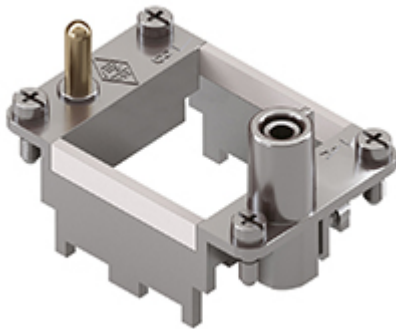


Part number

RX 02 TM



Frame for Mixo inserts, 2 modules, for 2 modular inserts and enclosures size "44.27", frame for hoods, HNM - High Number of Matings version

Product description	
Product type	Frame for Mixo inserts
Size	2 modules
Specification	For 2 modular inserts and enclosures size 44.27 Frame for hoods, HNM - High Number of Matings version
Further technical details	
Weight	45,00 g

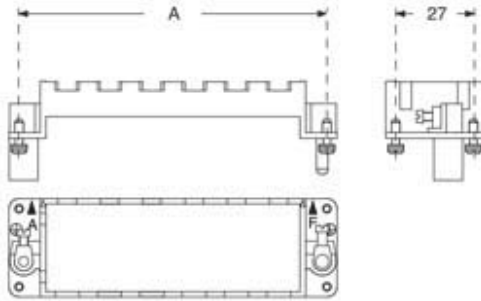
Material properties	
RoHs conformity	Compliant with exemption 6(c): copper alloy containing up to 4% lead by weight
China RoHs - EFUP	50
REACH SVHC substances	Yes Lead
SCIP number	C0556c52-3b1b-4ffb-87d5-58c9db853c44
Approvals / Standards	
Certifications	DNV
UL	ECBT2
cUL	ECBT8
General ordering information	
EAN13 code	8015747239714
eCl@ss 8.1	27440210
ETIM 7.0	EC002310
Packaging Information	
Packaging length	270,00 mm
Packaging height	75,00 mm
Packaging width	180,00 mm
Packaging weight	2,80 kg
Packaging volume	3,65 dm ³
Packaging description	Carton box
Packaging quantity	60 Pcs
Packaging EAN code	8015747265485
Sub-packaging length	104,00 mm
Sub-packaging height	36,00 mm
Sub-packaging width	180,00 mm
Sub-packaging weight	0,47 kg
Sub-packaging volume	0,67 dm ³
Sub-packaging description	Carton tray
Sub-packaging quantity	10 Pcs
Sub-packaging EAN barcode	8015747265492

Part number

RX 02 TM



Catalogue drawings



part No.	A (mm)	for housings size
RX 02 TM / TF	44	44,27
RX 03 TM / TF	57	57,27
RX 04 TM / TF	77,5	77,27 and 77,62
RX 06 TM / TF	104	104,27 and 104,62

Notes

Dimensions shown in mm are not binding and may be changed without notice.

California Proposition 65 Information



WARNING

This product can expose you to lead and its compounds, known to the State of California to cause cancer and/or reproductive toxicity. For more information go to www.P65Warnings.ca.gov.