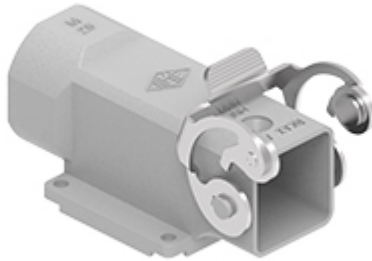


Part number

RKAX AP25



Angled Bulkhead mounting housing, CKA series, HNM - High Number of Matings series, with 1 lever, M25 cable entry, size "21.21", bulkhead hole closed

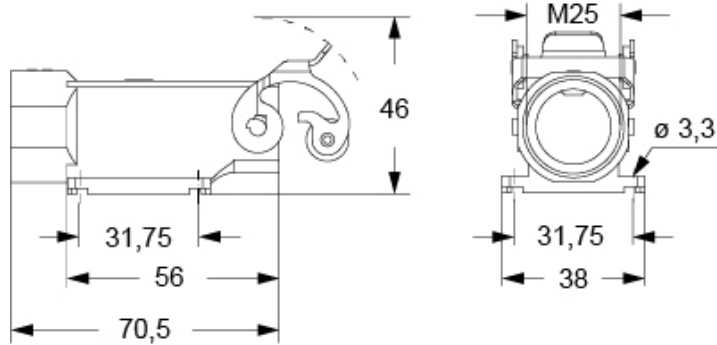
Product description		Material properties	
Product type	Angled bulkhead mounting housing	Main material	Zinc die-cast
Series	HNM - High Number of Matings	Other materials	Lever: stainless steel
Closing type	With 1 lever	Colour	RAL 7040 grey
Size	Size "21.21"	RoHs conformity	Compliant
Cable entry	With cable entry M25	China RoHs - EFUP	E
Specification	Bulkhead hole closed	REACH SVHC substances	No
Technical data		General ordering information	
IP degree of protection	IP44 - IP66 / IP67 / IP69 with CKR 65 (D)	EAN13 code	8015747140201
Further technical details		eCl@ss 8.1	27440202
Weight	109,50 g	ETIM 7.0	EC000437
Operating temperature range (min, max)	-40°C...+125°C	Packaging Information	
		Packaging weight	11,47 kg
		Packaging description	Carton box
		Packaging quantity	100 Pcs
		Packaging EAN code	8015747181075
		Sub-packaging length	210,00 mm
		Sub-packaging height	40,00 mm
		Sub-packaging width	175,00 mm
		Sub-packaging weight	1,15 kg
		Sub-packaging volume	1,47 dm ³
		Sub-packaging description	Carton box
		Sub-packaging quantity	10 Pcs
		Sub-packaging EAN barcode	8015747181297

Part number

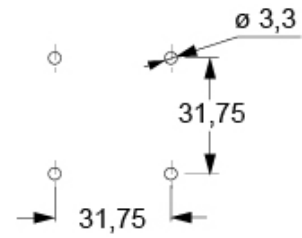
RKAX AP25



Catalogue drawings



Catalogue drawings



Notes

Dimensions shown in mm are not binding and may be changed without notice.