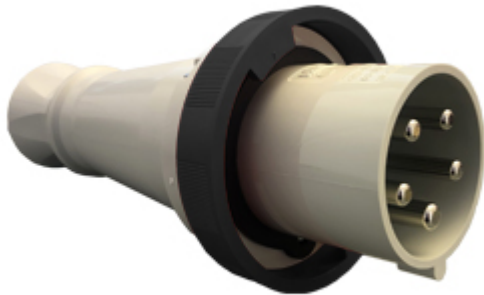



Part number

PEW 6375 SV



Mobile plug, PLUSO series, 3 poles + N + PE, 7 h (black), 63 A, 277/480 ÷ 288/500 V, straight

Product description		Material properties	
Product type	Plug Mobile	Colour	RAL 7035 grey, RAL 9005 black
Series	PEW...SV, PLUSO	RoHs conformity	Compliant with exemption 6(c): copper alloy containing up to 4% lead by weight
N. of poles	3 poles + N + 	China RoHs - EFUP	50
Clock position	7	REACH SVHC substances	Yes Lead
Specification	Straight	SCIP number	Ca7de37f-add8-4b77-9861-279c94903ade
Technical data		Approvals / Standards	
Current	63 A	Reference standard	EN 60309-1 and -2
Voltage	277/480 ÷ 288/500 V	General ordering information	
IP degree of protection	IP67	EAN13 code	8015747078023
Further technical details		Packaging Information	
Weight	769,00 g	Packaging weight	1,73 kg
Operating temperature range (min, max)	-25°C ... +40°C	Packaging volume	6,61 dm ³
		Packaging description	Carton box
		Packaging quantity	2 Pcs
		Packaging EAN code	8015747078030

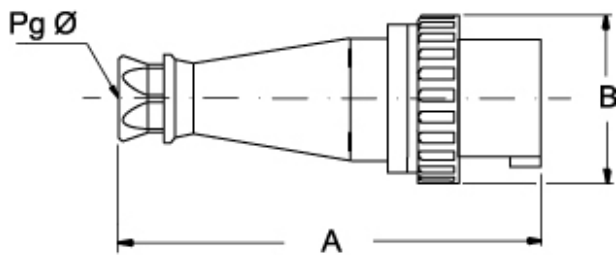
Part number

PEW 6375 SV



Catalogue drawings

(63 / 125A) PEW ... SV



PEW ... SV	A	B	Pg Ø
63A 2P+⊕	264,5	112	36
3P+⊕	264,5	112	36
3P+N+⊕	264,5	112	36
125A 2P+⊕	310	130	2" gas
3P+⊕	310	130	2" gas
3P+N+⊕	310	130	2" gas

Notes

Dimensions shown in mm are not binding and may be changed without notice.

32A only version PHW...SV)

- Compliant with EN 60309-1 and -2
- Enclosure, insert and locking ring in insulating, thermoplastic, self-extinguishing material
- PE...SV types 16A and 32A (IP44), entry with cable gland colour coded according to the operating voltage, RAL 7035 grey enclosure
- PEW...SV types 16A and 32A (IP66/IP67), entry with cable gland colour coded according to the operating voltage, RAL 7035 grey enclosure, locking ring with gasket colour coded according to operating voltage
- PEW...SV types 63A and 125A (IP67), entry with cable gland, RAL 7035 grey enclosure, locking ring with gasket colour coded according to operating voltage
- PEW...SV types 63A and 125A (IP67), cable anchoring collar incorporated in the insert
- SIP version with phase inverter (3P+N+E, h6), 16A and 32A
- Terminals with retained screws
- 63A, 125A: with pilot contact
- Nickel-plated contacts standard on 63A and 125A (on 16A and