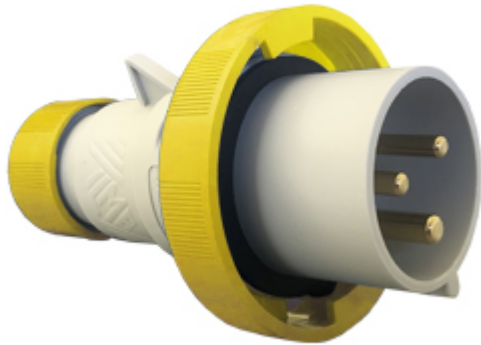



Part number

# PEW 3243 SV



Mobile plug, PLUSO series, 2 poles + PE, 4 h (yellow), 32 A, 100 ÷ 130 V, straight

## Product description

<b>Product type</b>	Plug Mobile
<b>Series</b>	PEW...SV, PLUSO
<b>N. of poles</b>	2 poles + 
<b>Clock position</b>	4
<b>Specification</b>	Straight

## Technical data

<b>Current</b>	32 A
<b>Voltage</b>	100 ÷ 130 V
<b>IP degree of protection</b>	IP67

## Further technical details

<b>Weight</b>	233,00 g
<b>Operating temperature range (min, max)</b>	-25°C ... +40°C

## Material properties

<b>Colour</b>	RAL 7035 grey, RAL 1021 yellow
<b>RoHs conformity</b>	Compliant with exemption 6(c): copper alloy containing up to 4% lead by weight
<b>China RoHs - EFUP</b>	50
<b>REACH SVHC substances</b>	Yes Lead
<b>SCIP number</b>	Ca7de37f-add8-4b77-9861-279c94903ade

## Approvals / Standards

<b>Reference standard</b>	EN 60309-1 and -2
---------------------------	-------------------

## General ordering information

<b>EAN13 code</b>	8015747074780
-------------------	---------------

## Packaging Information

<b>Packaging length</b>	330,00 mm
<b>Packaging height</b>	175,00 mm
<b>Packaging width</b>	295,00 mm
<b>Packaging weight</b>	2,66 kg
<b>Packaging volume</b>	17,04 dm <sup>3</sup>
<b>Packaging description</b>	Carton box
<b>Packaging quantity</b>	10 Pcs
<b>Packaging EAN code</b>	8015747074797

Part number

# PEW 3243 SV



## Catalogue drawings

(16 / 32A) PEW ... SV



PEW ... SV		A	B	Pg Ø
<b>16A</b>	2P+⊕	137	70	16
	3P+⊕	142	78	16
	3P+N+⊕	150	86	21
<b>32A</b>	2P+⊕	170	92	21
	3P+⊕	170	92	21
	3P+N+⊕	175	99,5	21

## Notes

Dimensions shown in mm are not binding and may be changed without notice.

32A only version PHW...SV)

- Compliant with EN 60309-1 and -2
- Enclosure, insert and locking ring in insulating, thermoplastic, self-extinguishing material
- PE...SV types 16A and 32A (IP44), entry with cable gland colour coded according to the operating voltage, RAL 7035 grey enclosure
- PEW...SV types 16A and 32A (IP66/IP67), entry with cable gland colour coded according to the operating voltage, RAL 7035 grey enclosure, locking ring with gasket colour coded according to operating voltage
- PEW...SV types 63A and 125A (IP67), entry with cable gland, RAL 7035 grey enclosure, locking ring with gasket colour coded according to operating voltage
- PEW...SV types 63A and 125A (IP67), cable anchoring collar incorporated in the insert
- SIP version with phase inverter (3P+N+E, h6), 16A and 32A
- Terminals with retained screws
- 63A, 125A: with pilot contact
- Nickel-plated contacts standard on 63A and 125A (on 16A and