


Part number

# PEW 32123 SM



Wall-mounting plug, PLUSO series, 2 poles + PE, 12 h (white), 32 A

#### Product description

<b>Product type</b>	Plug Wall-mounting
<b>Series</b>	PEW...SM, PLUSO
<b>N. of poles</b>	2 poles + 
<b>Clock position</b>	12

#### Technical data

<b>Current</b>	32 A
<b>Voltage</b>	ins. transformer
<b>IP degree of protection</b>	IP67

#### Further technical details

<b>Operating temperature range (min, max)</b>	-25°C ... +40°C
---	-----------------

#### Material properties

<b>Colour</b>	RAL 7035 grey, RAL 9010 white
---------------	-------------------------------

#### Approvals / Standards

<b>Reference standard</b>	EN 60309-1 and -2
---------------------------	-------------------

#### General ordering information

<b>EAN13 code</b>	8015747157544
-------------------	---------------

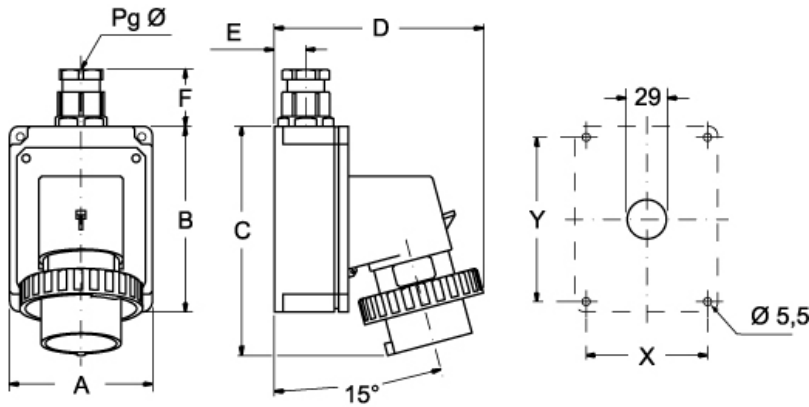
Part number

# PEW 32123 SM



Catalogue drawings

(16 / 32A) PEW ... SM



PEW ... SM	A	B	C	D	E	F	X	Y	Pg Ø
<b>16A</b> 2P+⊕	75	115	144	126	19	35	65	105	16
3P+⊕	75	115	144	134	19	35	65	105	16
3P+N+⊕	100	130	164	145	22	42	85	115	21
<b>32A</b> 2P+⊕	100	130	178	154	22	42	85	115	21
3P+⊕	100	130	178	154	22	42	85	115	21
3P+N+⊕	100	130	178	160	22	42	85	115	21

## Notes

Dimensions shown in mm are not binding and may be changed without notice.

- Compliant with EN 60309-1 and -2
- Enclosure, insert and locking ring in insulating, thermoplastic, self-extinguishing material
- PE...SM types (IP44), enclosure colour coded according to the operating voltage, top entry with threaded grommet (replaceable with cable gland)
- PEW...SM types (IP67), RAL 7035 grey enclosure, locking ring with gasket colour coded according to the operating voltage, top entry with cable gland
- Terminals with retained screws
- 63A, 125A: with pilot contact
- Nickel-plated contacts, available on request for 16A and 32A (standard on 63A and 125A). For the code of products with nickel-plated contacts (socket holes, plug pins), add "N" to the pre-code of the corresponding standard product code; for example: PE becomes PEN and PEW becomes PEWN.
- 125A: with terminal block for the anchoring of incoming cables, already connected to socket
- IP44 and IP67 degrees of protection (EN 6052)