


Part number

PEW 216 PQF



Schuko® flush-mounting socket outlet, PLUSO series, 2 poles + PE, 16 A, 200 ÷ 250 V

Product description

Product type	Socket Flush-mounting
Series	PEW...PQF, PLUSO
N. of poles	2 poles + 
Size	Socket fixing centre distance 60 x 60 mm
Specification	Schuko®

Technical data

Current	16 A
Voltage	200 ÷ 250 V
IP degree of protection	IP67

Further technical details

Weight	105,00 g
Operating temperature range (min, max)	-25°C ... +40°C

General ordering information

EAN13 code 8015747074063

Packaging Information

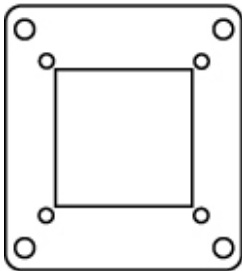
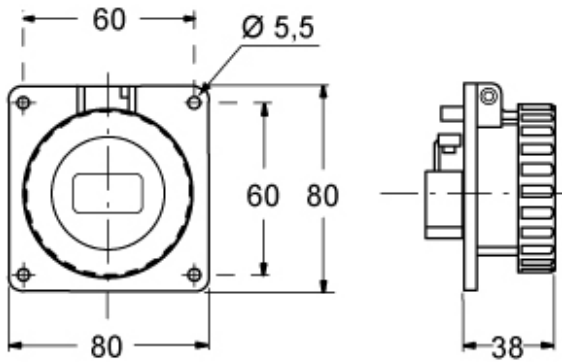
Packaging length	200,00 mm
Packaging height	165,00 mm
Packaging width	200,00 mm
Packaging weight	1,21 kg
Packaging volume	6,60 dm ³
Packaging description	Carton box
Packaging quantity	10 Pcs
Packaging EAN code	8015747074070

Part number

PEW 216 PQF



Catalogue drawings



Notes

Dimensions shown in mm are not binding and may be changed without notice.
