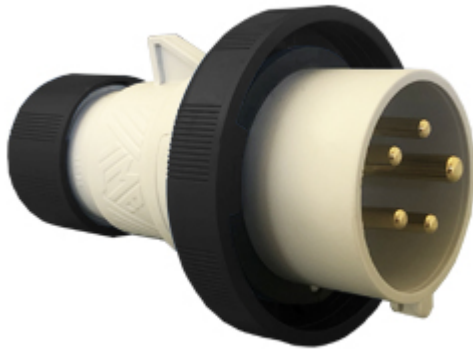



Part number

PEW 1675 SV



Mobile plug, PLUSO series, 3 poles + N + PE, 7 h (black), 16 A, 277/480 ÷ 288/500 V, straight

Product description

Product type	Plug Mobile
Series	PEW...SV, PLUSO
N. of poles	3 poles + N + 
Clock position	7
Specification	Straight

Technical data

Current	16 A
Voltage	277/480 ÷ 288/500 V
IP degree of protection	IP67

Further technical details

Weight	182,00 g
Operating temperature range (min, max)	-25°C ... +40°C

Material properties

Colour	RAL 7035 grey, RAL 9005 black
RoHs conformity	Compliant with exemption 6(c): copper alloy containing up to 4% lead by weight
China RoHs - EFUP	50
REACH SVHC substances	Yes Lead
SCIP number	Ca7de37f-add8-4b77-9861-279c94903ade

Approvals / Standards

Reference standard	EN 60309-1 and -2
---------------------------	-------------------

General ordering information

EAN13 code	8015747073493
-------------------	---------------

Packaging Information

Packaging length	255,00 mm
Packaging height	195,00 mm
Packaging width	245,00 mm
Packaging weight	2,08 kg
Packaging volume	12,18 dm ³
Packaging description	Carton box
Packaging quantity	10 Pcs
Packaging EAN code	8015747073509

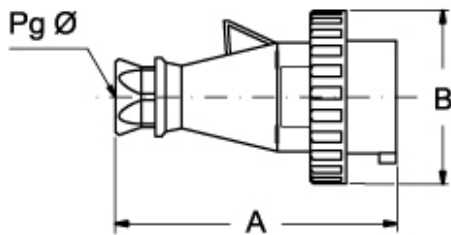
Part number

PEW 1675 SV



Catalogue drawings

(16 / 32A) PEW ... SV



PEW ... SV		A	B	Pg Ø
16A	2P+⊕	137	70	16
	3P+⊕	142	78	16
	3P+N+⊕	150	86	21
32A	2P+⊕	170	92	21
	3P+⊕	170	92	21
	3P+N+⊕	175	99,5	21

Notes

Dimensions shown in mm are not binding and may be changed without notice.

32A only version PHW...SV)

- Compliant with EN 60309-1 and -2
- Enclosure, insert and locking ring in insulating, thermoplastic, self-extinguishing material
- PE...SV types 16A and 32A (IP44), entry with cable gland colour coded according to the operating voltage, RAL 7035 grey enclosure
- PEW...SV types 16A and 32A (IP66/IP67), entry with cable gland colour coded according to the operating voltage, RAL 7035 grey enclosure, locking ring with gasket colour coded according to operating voltage
- PEW...SV types 63A and 125A (IP67), entry with cable gland, RAL 7035 grey enclosure, locking ring with gasket colour coded according to operating voltage
- PEW...SV types 63A and 125A (IP67), cable anchoring collar incorporated in the insert
- SIP version with phase inverter (3P+N+E, h6), 16A and 32A
- Terminals with retained screws
- 63A, 125A: with pilot contact
- Nickel-plated contacts standard on 63A and 125A (on 16A and