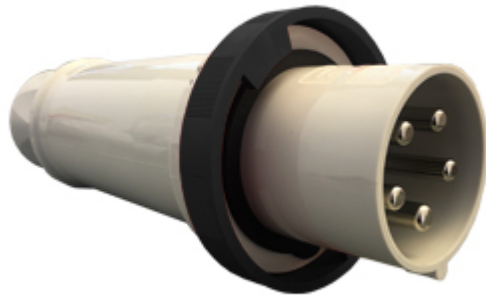



Part number

PEW 12575 SV



Mobile plug, PLUSO series, 3 poles + N + PE, 7 h (black), 125 A, 277/480 ÷ 288/500 V, straight

Product description

Product type	Plug Mobile
Series	PEW...SV, PLUSO
N. of poles	3 poles + N + 
Clock position	7
Specification	Straight

Technical data

Current	125 A
Voltage	277/480 ÷ 288/500 V
IP degree of protection	IP67

Further technical details

Weight	1.815,00 g
Operating temperature range (min, max)	-25°C ... +40°C

Material properties

Colour	RAL 7035 grey, RAL 9005 black
RoHs conformity	Compliant with exemption 6(c): copper alloy containing up to 4% lead by weight
China RoHs - EFUP	50
REACH SVHC substances	Yes Lead
SCIP number	Ca7de37f-add8-4b77-9861-279c94903ade

Approvals / Standards

Reference standard	EN 60309-1 and -2
---------------------------	-------------------

General ordering information

EAN13 code	8015747070959
-------------------	---------------

Packaging Information

Sub-packaging length	325,00 mm
Sub-packaging height	125,00 mm
Sub-packaging width	125,00 mm
Sub-packaging weight	1,82 kg
Sub-packaging volume	5,08 dm ³
Sub-packaging description	Carton box
Sub-packaging quantity	1 Pcs
Sub-packaging EAN barcode	8015747070966

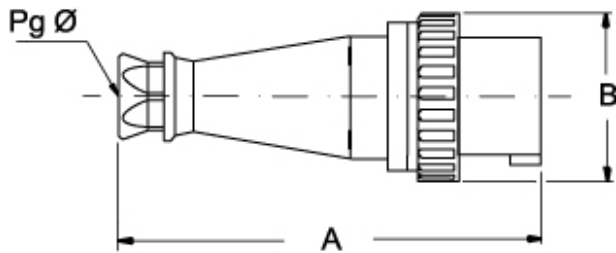
Part number

PEW 12575 SV



Catalogue drawings

(63 / 125A) PEW ... SV



PEW ... SV		A	B	Pg Ø
63A	2P+⊕	264,5	112	36
	3P+⊕	264,5	112	36
	3P+N+⊕	264,5	112	36
125A	2P+⊕	310	130	2" gas
	3P+⊕	310	130	2" gas
	3P+N+⊕	310	130	2" gas

Notes

Dimensions shown in mm are not binding and may be changed without notice.

32A only version PHW...SV)

- Compliant with EN 60309-1 and -2
- Enclosure, insert and locking ring in insulating, thermoplastic, self-extinguishing material
- PE...SV types 16A and 32A (IP44), entry with cable gland colour coded according to the operating voltage, RAL 7035 grey enclosure
- PEW...SV types 16A and 32A (IP66/IP67), entry with cable gland colour coded according to the operating voltage, RAL 7035 grey enclosure, locking ring with gasket colour coded according to operating voltage
- PEW...SV types 63A and 125A (IP67), entry with cable gland, RAL 7035 grey enclosure, locking ring with gasket colour coded according to operating voltage
- PEW...SV types 63A and 125A (IP67), cable anchoring collar incorporated in the insert
- SIP version with phase inverter (3P+N+E, h6), 16A and 32A
- Terminals with retained screws
- 63A, 125A: with pilot contact
- Nickel-plated contacts standard on 63A and 125A (on 16A and