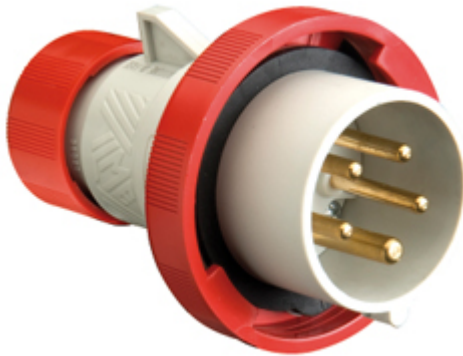



Part number

PESW 1665 SV



Mobile plug, PLUSO series, SQUICH® quick connection, 3 poles + N + PE, 6 h (red), 16 A, 380 ÷ 415 V, straight

Product description

Product type	Plug Mobile
Series	PESW...SV, PLUSO
Connection type	SQUICH® quick connection
N. of poles	3 poles + N + 
Clock position	6
Specification	Straight

Technical data

Current	16 A
Voltage	380 ÷ 415 V
IP degree of protection	IP66 / IP67

Further technical details

Weight	206,00 g
Operating temperature range (min, max)	-25°C ... +40°C

Material properties

Colour	RAL 7035 grey, RAL 3000 red Compliant with exemption 6(c): copper alloy containing up to 4% lead by weight
RoHs conformity	6(c): copper alloy containing up to 4% lead by weight
China RoHs - EFUP	50
REACH SVHC substances	Yes Lead
SCIP number	Ca7de37f-add8-4b77-9861-279c94903ade

Approvals / Standards

Reference standard	EN 60309-1 and -2
---------------------------	-------------------

General ordering information

EAN13 code	8015747187268
-------------------	---------------

Packaging Information

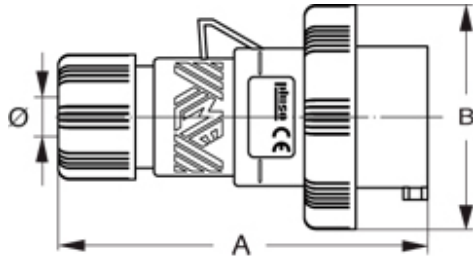
Packaging length	330,00 mm
Packaging height	170,00 mm
Packaging width	352,00 mm
Packaging weight	4,22 kg
Packaging volume	19,75 dm ³
Packaging description	Carton box
Packaging quantity	20 Pcs
Packaging EAN code	8015747187299

Part number

PESW 1665 SV



Catalogue drawings



Notes

Dimensions shown in mm are not binding and may be changed without notice.

- Compliant with EN 60309-1 and -2
- Enclosure, insert and locking ring in insulating, thermoplastic, self-extinguishing material
- PES...SV types (IP44), entry with cable gland colour coded according to the operating voltage, RAL 7035 grey enclosure
- PESW...SV types (IP66/IP67), entry with cable gland colour coded according to the operating voltage, RAL 7035 grey enclosure, locking ring with gasket colour coded according to operating voltage
- Terminals with retained screws
- IP44 and IP66/IP67 degrees of protection (EN 60529)

Connection

