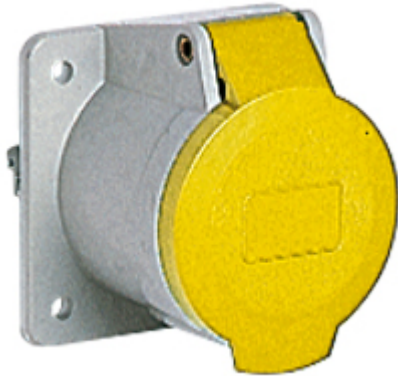



Part number

# PE 1644 PQF



Flush-mounting socket outlet, PLUSO series, 3 poles + PE, 4 h (yellow), 16 A, 100 ÷ 130 V, straight, with bigger flange

Product description	
<b>Product type</b>	Socket Flush-mounting
<b>Series</b>	PE...PQF, PLUSO
<b>N. of poles</b>	3 poles + 
<b>Clock position</b>	4
<b>Size</b>	Socket fixing centre distance 60 x 60 mm
<b>Specification</b>	Straight, bigger flange
Technical data	
<b>Current</b>	16 A
<b>Voltage</b>	100 ÷ 130 V
<b>IP degree of protection</b>	IP44
Further technical details	
<b>Weight</b>	151,00 g
<b>Operating temperature range (min, max)</b>	-25°C ... +40°C

Material properties	
<b>Colour</b>	RAL 7035 grey, RAL 1021 yellow
Approvals / Standards	
<b>Reference standard</b>	EN 60309-1 and -2
General ordering information	
<b>EAN13 code</b>	8015747063999
Packaging Information	
<b>Packaging description</b>	Carton box
<b>Packaging quantity</b>	10 Pcs
<b>Packaging EAN code</b>	8015747110051

Part number

# PE 1644 PQF



Catalogue drawings

**PEW...PQ - PQF flush-mounting straight socket-outlets, low voltage from over 50V up to 690V**

16A IP67 degree of protection		32A IP67 degree of protection		16A IP67 degree of protection		16A IP67 degree of protection	
Part No.	Colour	Part No.	Colour	Part No.	Colour	Part No.	Colour
PEW 1643 PQ ⊕ PEW 1663 PQ ⊕ PEW 1693 PQ ⊕ PEW 1673 PQ ⊕ PEW 16123 PQ ⊕ PEW 1623 PQ ⊕ PEW 1633 PQ ⊕ PEW 1683 PQ ⊕	       	PEW 3243 PQ ⊕ PEW 3263 PQ ⊕ PEW 3293 PQ ⊕ PEW 3273 PQ ⊕ PEW 32123 PQ ⊕ PEW 3223 PQ ⊕ PEW 3233 PQ ⊕ PEW 3283 PQ ⊕	      	PE 1643 PQF ⊕ PE 1663 PQF ⊕ PE 1693 PQF ⊕ PE 1673 PQF ⊕ PE 16123 PQF ⊕ PE 1623 PQF ⊕ PE 1633 PQF ⊕ PE 1683 PQF ⊕	       	PEW 1643 PQF ⊕ PEW 1663 PQF ⊕ PEW 1693 PQF ⊕ PEW 1673 PQF ⊕ PEW 16123 PQF ⊕ PEW 1623 PQF ⊕ PEW 1633 PQF ⊕ PEW 1683 PQF ⊕	       
52 x 52 mm		60 x 60 mm		60 x 60 mm		60 x 60 mm	
PEW 1644 PQ ⊕ PEW 1694 PQ ⊕ PEW 1664 PQ ⊕ PEW 16114 PQ ⊕ PEW 1674 PQ ⊕ PEW 1654 PQ ⊕ PEW 1634 PQ ⊕ PEW 1634 PQ ⊕ PEW 16104 PQ ⊕ PEW 1624 PQ ⊕	       	PEW 3244 PQ ⊕ PEW 3294 PQ ⊕ PEW 3264 PQ ⊕ PEW 32114 PQ ⊕ PEW 3274 PQ ⊕ PEW 3254 PQ ⊕ PEW 3234 PQ ⊕ PEW 3234 PQ ⊕ PEW 32104 PQ ⊕ PEW 3224 PQ ⊕	      	PE 1644 PQF ⊕ PE 1694 PQF ⊕ PE 1664 PQF ⊕ PE 16114 PQF ⊕ PE 1674 PQF ⊕ PE 1654 PQF ⊕ PE 1634 PQF ⊕ PE 1634 PQF ⊕ PE 16104 PQF ⊕ PE 1624 PQF ⊕	       	PEW 3244 PQF ⊕ PEW 3294 PQF ⊕ PEW 3264 PQF ⊕ PEW 32114 PQF ⊕ PEW 3274 PQF ⊕ PEW 3254 PQF ⊕ PEW 3234 PQF ⊕ PEW 3234 PQF ⊕ PEW 32104 PQF ⊕ PEW 3224 PQF ⊕	       
52 x 52 mm		60 x 60 mm		60 x 60 mm		60 x 60 mm	
PEW 1645 PQ ⊕ PEW 1695 PQ ⊕ PEW 1665 PQ ⊕ PEW 1675 PQ ⊕ PEW 1655 PQ ⊕ PEW 16115 PQ ⊕ PEW 1635 PQ ⊕ PEW 1635 PQ ⊕ PEW 1625 PQ ⊕	       	PEW 3245 PQ ⊕ PEW 3295 PQ ⊕ PEW 3265 PQ ⊕ PEW 3275 PQ ⊕ PEW 3255 PQ ⊕ PEW 32115 PQ ⊕ PEW 3235 PQ ⊕ PEW 3235 PQ ⊕ PEW 3225 PQ ⊕	      				
60 x 60 mm		60 x 60 mm					

dimensions in mm

(16 / 32A) PEW ... PQ  
(16A) PEW ... PQF

PEW...PQ	A	B	C	D	E	H	X	Y
16A 2P+⊕	85	85	77	52	27	60	52	52
3P+⊕	85	85	85	52	27	61,5	52	52
3P+N+⊕	80	80	93	52	27	70	60	60
32A 2P+⊕	80	80	98	62	28	68	60	60
3P+⊕	80	80	98	62	28	68	60	60
3P+N+⊕	80	80	105	62	28	73	60	60

PEW ... PQF	A	B	C	D	E	H	X	Y
16A 2P+⊕	80	80	77	52	27	60	60	60
3P+⊕	80	80	85	52	27	61,5	60	60

## Notes

Dimensions shown in mm are not binding and may be changed without notice.