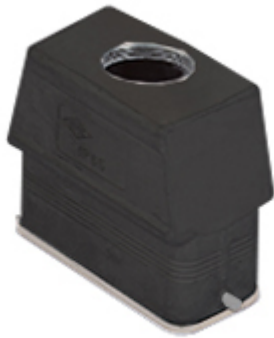


Part number

MZFWW 25 L25



Hood, W-TYPE series, with 2 pegs, M25 top cable entry without adapter, size "66.16", high construction

Product description		Material properties	
Product type	Hood	Other materials	Gasket: FKM
Series	W-TYPE	Colour	RAL 9005 black
Closing type	With 2 pegs	RoHs conformity	Compliant
Size	Size 66.16	China RoHs - EFUP	E
Cable entry	Top cable entry M25	REACH SVHC substances	No
Specification	High construction	Approvals / Standards	
Technical data		Certifications	DNV, BV
IP degree of protection	IP65 / IP66 / IP69	UL	ECBT2
Further technical details		cUL	ECBT8
Weight	145,00 g	General ordering information	
Operating temperature range (min, max)	-40°C...+125°C	EAN13 code	8015747154161
		Packaging Information	
		Packaging weight	1,62 kg
		Packaging description	Carton box
		Packaging quantity	10 Pcs
		Packaging EAN code	8015747289429
		Sub-packaging length	260,00 mm
		Sub-packaging height	115,00 mm
		Sub-packaging width	120,00 mm
		Sub-packaging weight	0,16 kg
		Sub-packaging volume	3,59 dm ³
		Sub-packaging description	Plastic packaging
		Sub-packaging quantity	1 Pcs
		Sub-packaging EAN barcode	8015747290166

Part number

MZFWW 25 L25



Notes

Dimensions shown in mm are not binding and may be changed without notice.
