

Part number

MZ7PE 15L225



Surface mounting housing, E-Xtreme® CZ7 series, with 1 lever, M25 x 2 cable entry, size "49.16"

Product description

Product type	Surface mounting housing
Series	E-Xtreme® CZ7
Closing type	With 1 lever
Size	Size 49.16
Cable entry	With cable entry M25 x 2

Technical data

IP degree of protection IP66 / IP67 / IP69

Further technical details

Operating temperature range (min, max) -40°C...+125°C

Material properties

Other materials	Lever: Stainless steel
Colour	RAL 7016 grey
RoHs conformity	Compliant
China RoHs - EFUP	E
REACH SVHC substances	No

Approvals / Standards

UL	ECBT2
cUL	ECBT8

General ordering information

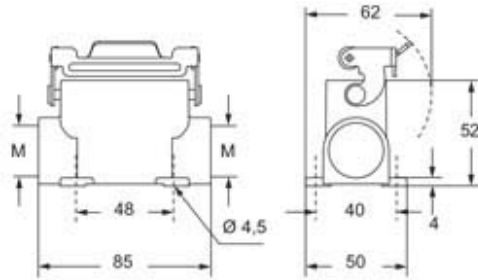
EAN13 code	8015747255097
eCl@ss 8.1	27440202
ETIM 7.0	EC000437

Part number

MZ7PE 15L225



Catalogue drawings



Notes

Dimensions shown in mm are not binding and may be changed without notice.
