

Part number

MZ7P 15LS225



Surface mounting housing, CZ7 series, with 1 lever, M25 x 2 cable entry, size "49.16", with metal cover

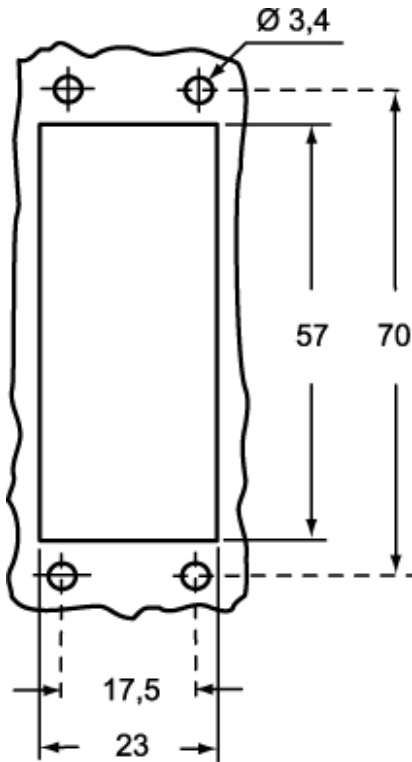
Product description		Material properties	
Product type	Surface mounting housing	Other materials	Lever: Stainless steel
Series	CZ7	Colour	RAL 7040 grey
Closing type	With 1 lever	RoHs conformity	Compliant
Size	Size 49.16	China RoHs - EFUP	E
Cable entry	With cable entry M25 x 2	REACH SVHC substances	No
Specification	With metal cover	Approvals / Standards	
Technical data		UL	ECBT2
IP degree of protection	IP66 / IP67 / IP69	cUL	ECBT8
Further technical details		General ordering information	
Weight	216,00 g	EAN13 code	8015747238663
Operating temperature range (min, max)	-40°C...+125°C	eCl@ss 8.1	27440202
		ETIM 7.0	EC000437
		Packaging Information	
		Packaging length	190,00 mm
		Packaging height	125,00 mm
		Packaging width	330,00 mm
		Packaging weight	2,24 kg
		Packaging volume	7,84 dm ³
		Packaging description	Carton box
		Packaging quantity	10 Pcs
		Packaging EAN code	8015747238687
		Sub-packaging weight	1,12 kg
		Sub-packaging description	Plastic packaging
		Sub-packaging quantity	5 Pcs
		Sub-packaging EAN barcode	8015747238694

Part number

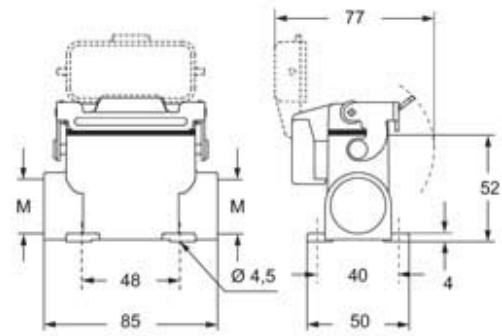
MZ7P 15LS225



Catalogue drawings



Catalogue drawings



Notes

Dimensions shown in mm are not binding and may be changed without notice.