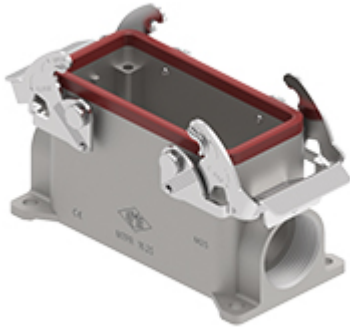


Part number

MVPR 16.25



Surface mounting housing, V-TYPE series, 180 °C series, with 2 lever, M25 cable entry, size "77.27"

Product description

Product type	Surface mounting housing
Series	180 °C
Closing type	With 2 levers
Size	Size 77.27
Cable entry	With cable entry M25

Technical data

IP degree of protection IP65

Further technical details

Weight	324,00 g
Operating temperature range (min, max)	-40°C ... +180°C

Material properties

Other materials	Lever: Stainless steel Gasket: FKM
RoHs conformity	Compliant
China RoHs - EFUP	E
REACH SVHC substances	No

Approvals / Standards

Certifications	DNV, BV
UL	ECBT2
cUL	ECBT8

General ordering information

EAN13 code	8015747291484
eCl@ss 8.1	27440202
ETIM 7.0	EC000437

Packaging Information

Packaging length	330,00 mm
Packaging height	175,00 mm
Packaging width	295,00 mm
Packaging weight	6,90 kg
Packaging volume	17,04 dm ³
Packaging description	Carton box
Packaging quantity	20 Pcs
Packaging EAN code	8015747291491
Sub-packaging weight	1,73 kg
Sub-packaging description	Plastic packaging
Sub-packaging quantity	5 Pcs
Sub-packaging EAN barcode	8015747291507

Part number

MVPR 16.25



Notes

Dimensions shown in mm are not binding and may be changed without notice.
