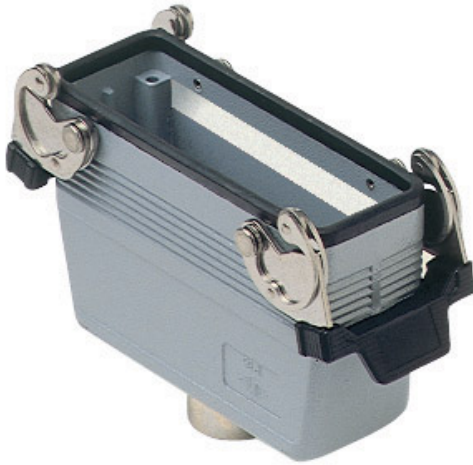


Part number

MMAV 16 G25



Hood, 830V series, with 2 levers, M25 top cable entry, size "104.27", high construction

Product description		Material properties	
Product type	Hood	Colour	RAL 7040 grey
Series	830V		Compliant with exemption
Closing type	With 2 levers	RoHs conformity	6(c): copper alloy containing up to 4% lead by weight
Size	Size 104.27	China RoHs - EFUP	50
Cable entry	Top cable entry with adapter M25	REACH SVHC substances	Yes Lead
Specification	High construction	SCIP number	15deaf78-e939-4401-a0b0-e2228ca32a03
Technical data		Approvals / Standards	
IP degree of protection	IP65 / IP66 / IP69	Certifications	DNV, BV
Further technical details		UL	ECBT2
Weight	397,00 g	cUL	ECBT8
Operating temperature range (min, max)	-40°C...+125°C	General ordering information	
		EAN13 code	8015747058094
		Packaging Information	
		Sub-packaging weight	1,99 kg
		Sub-packaging description	Plastic packaging
		Sub-packaging quantity	5 Pcs
		Sub-packaging EAN barcode	8015747058100

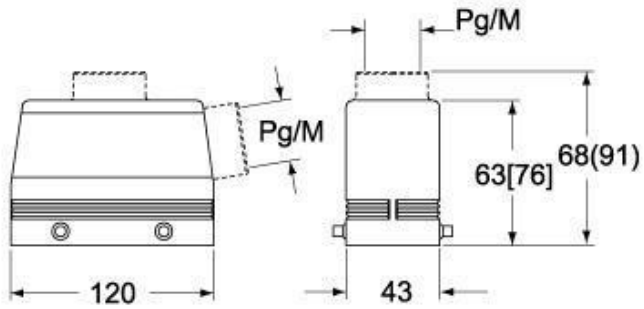
Part number

MMAV 16 G25

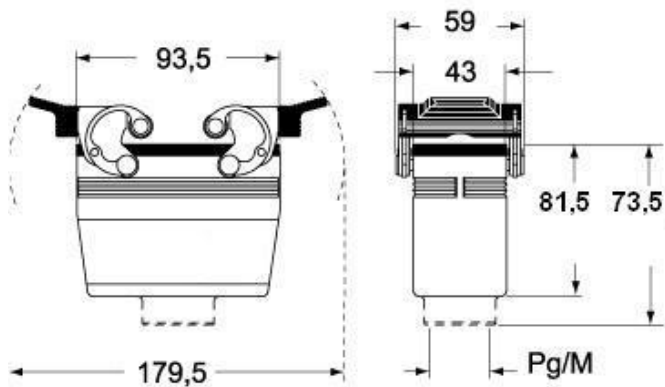


Catalogue drawings

**CMO [CMAO] CMV (CMAV) - MMO [MMAO]
MMV (MMAV)**



CMV G (CMAV G) - MMV G (MMAV G) - [MMFV G]



Notes

Dimensions shown in mm are not binding and may be changed without notice.