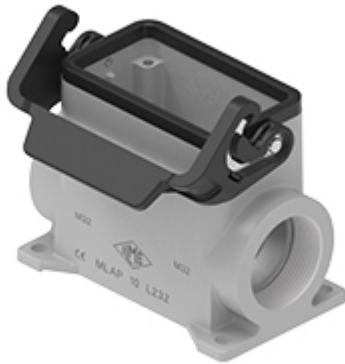


Part number

MLAP 10 L32



Surface mounting housing, IL-BRID series, with 1 lever, M32 cable entry, size "57.27", high construction

Product description

Product type	Surface mounting housing
Series	IL-BRID
Closing type	With 1 lever
Size	Size 57.27
Cable entry	With cable entry M32
Specification	High construction

Technical data

IP degree of protection	IP65 / IP66 / IP69
--------------------------------	--------------------

Further technical details

Weight	284,50 g
Operating temperature range (min, max)	-40°C...+125°C

Material properties

Other materials	Lever: Polyamide (PA) and Stainless steel core Gasket: Rubber
Colour	RAL 7040 grey
RoHS conformity	Compliant
China RoHS - EFUP	E
REACH SVHC substances	No

General ordering information

EAN13 code	8015747287517
eCl@ss 8.1	27440202
ETIM 7.0	EC000437

Packaging Information

Packaging length	300,00 mm
Packaging height	130,00 mm
Packaging width	200,00 mm
Packaging weight	3,07 kg
Packaging volume	7,80 dm ³
Packaging description	Carton box
Packaging quantity	10 Pcs
Packaging EAN code	8015747194778
Sub-packaging weight	1,54 kg
Sub-packaging description	Plastic packaging
Sub-packaging quantity	5 Pcs
Sub-packaging EAN barcode	8015747194785

Part number

MLAP 10 L32



Catalogue drawings

