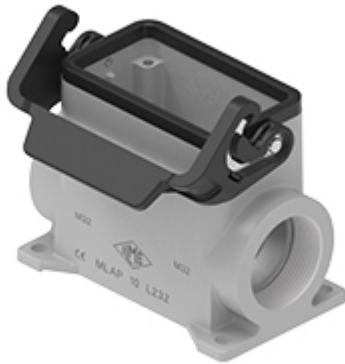


Part number

# MLAP 10 L232



Surface mounting housing, IL-BRID series, with 1 lever, M32 x 2 cable entry, size "57.27", high construction

Product description		Material properties	
<b>Product type</b>	Surface mounting housing	<b>Other materials</b>	Lever: Polyamide (PA) and Stainless steel core Gasket NBR
<b>Series</b>	IL-BRID	<b>Colour</b>	RAL 7040 grey
<b>Closing type</b>	With 1 lever	<b>RoHs conformity</b>	Compliant
<b>Size</b>	Size 57.27	<b>China RoHs - EFUP</b>	E
<b>Cable entry</b>	With cable entry M32 x 2	<b>REACH SVHC substances</b>	No
<b>Specification</b>	High construction	<b>General ordering information</b>	
Technical data		<b>EAN13 code</b>	8015747287494
<b>IP degree of protection</b>	IP65 / IP66 / IP69	<b>eCl@ss 8.1</b>	27440202
Further technical details		<b>ETIM 7.0</b>	EC000437
<b>Weight</b>	1,00 g	<b>Packaging Information</b>	
<b>Operating temperature range (min, max)</b>	-40°C...+125°C	<b>Packaging length</b>	475,00 mm
		<b>Packaging height</b>	200,00 mm
		<b>Packaging width</b>	150,00 mm
		<b>Packaging volume</b>	14,25 dm <sup>3</sup>
		<b>Packaging description</b>	Carton box
		<b>Packaging quantity</b>	10 Pcs
		<b>Packaging EAN code</b>	8015747194730
		<b>Sub-packaging description</b>	Plastic packaging
		<b>Sub-packaging quantity</b>	5 Pcs
		<b>Sub-packaging EAN barcode</b>	8015747194747

Part number

# MLAP 10 L232



Catalogue drawings

