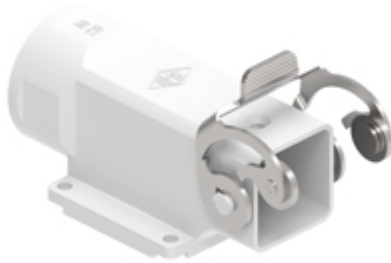


Part number

MKX AP25



Angled Surface mounting housing, CK series, with 1 stainless steel lever, M25 cable entry, size "21.21", fixing by 4 screws

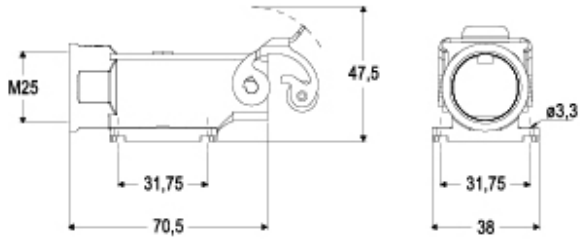
Product description		Material properties	
Product type	Angled surface mounting housing	Other materials	Lever: Stainless steel
Series	CK	Colour	RAL 7035 grey
Closing type	With 1 lever	RoHs conformity	Compliant
Size	Size "21.21"	China RoHs - EFUP	E
Cable entry	With cable entry M25	REACH SVHC substances	No
Specification	Bulkhead hole closed	General ordering information	
Technical data		EAN13 code	8015747043601
IP degree of protection	IP44 - IP66 / IP67 / IP69 with CKR 65 (D)	eCl@ss 8.1	27440202
Further technical details		ETIM 7.0	EC000437
Weight	25,50 g	Packaging Information	
Operating temperature range (min, max)	-40°C...+125°C	Packaging length	375,00 mm
		Packaging height	230,00 mm
		Packaging width	205,00 mm
		Packaging weight	2,86 kg
		Packaging volume	17,68 dm ³
		Packaging description	Carton box
		Packaging quantity	100 Pcs
		Packaging EAN code	8015747224765
		Sub-packaging weight	0,29 kg
		Sub-packaging description	Carton box
		Sub-packaging quantity	10 Pcs
		Sub-packaging EAN barcode	8015747303460

Part number

MKX AP25



Catalogue drawings



Notes

Dimensions shown in mm are not binding and may be changed without notice.
