

Part number

MKAW V25



Hood, W-TYPE series, with 2 pegs, M25 top cable entry, size "21.21"

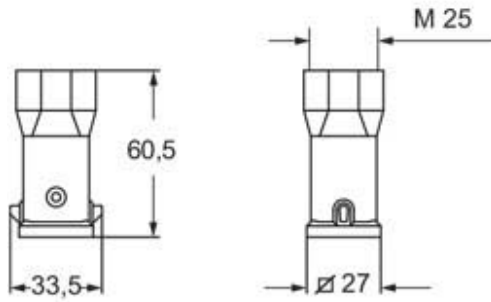
Product description		Material properties	
Product type	Hood	Main material	Zinc die-cast
Series	W-TYPE	Colour	RAL 7040 grey
Closing type	With 2 pegs	RoHs conformity	Compliant
Size	Size "21.21"	China RoHs - EFUP	E
Cable entry	Top cable entry M25	REACH SVHC substances	No
Technical data		Approvals / Standards	
IP degree of protection	IP44 - IP66 / IP67 / IP69 with CKR 65 (D)	Certifications	DNV, BV
Further technical details		UL	ECBT2
Weight	69,50 g	cUL	ECBT8
Operating temperature range (min, max)	-40°C...+125°C	General ordering information	
		EAN13 code	8015747225038
		eCl@ss 8.1	27440202
		ETIM 7.0	EC000437
		Packaging Information	
		Sub-packaging length	185,00 mm
		Sub-packaging height	40,00 mm
		Sub-packaging width	155,00 mm
		Sub-packaging weight	0,70 kg
		Sub-packaging volume	1,15 dm ³
		Sub-packaging description	Carton box
		Sub-packaging quantity	10 Pcs
		Sub-packaging EAN barcode	8015747225045

Part number

MKAW V25



Catalogue drawings



Notes

Dimensions shown in mm are not binding and may be changed without notice.
