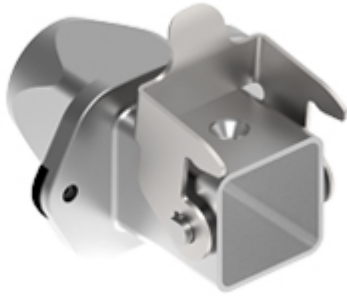


Part number

# MKAS IVG20



Bulkhead mounting housing, EMC series, with 1 lever, M20 rear cable entry, size "21.21"

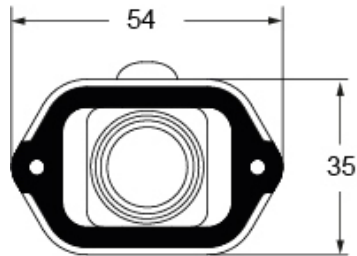
Product description		Material properties	
<b>Product type</b>	Bulkhead mounting housing	<b>Main material</b>	Zinc die-cast
<b>Series</b>	EMC	<b>Other materials</b>	Lever: Galvanized steel Gasket: Conductive elastomer
<b>Closing type</b>	With 1 lever	<b>Colour</b>	RAL 7040 grey
<b>Size</b>	Size "21.21"	<b>RoHs conformity</b>	Compliant
<b>Cable entry</b>	Rear cable entry M20	<b>China RoHs - EFUP</b>	E
Technical data		<b>REACH SVHC substances</b>	No
<b>IP degree of protection</b>	IP44 - IP66 / IP67 / IP69 with CKR 65 (D)	Approvals / Standards	
Further technical details		<b>Certifications</b>	DNV, BV
<b>Weight</b>	86,00 g	<b>UL</b>	ECBT2
<b>Operating temperature range (min, max)</b>	-40°C...+125°C	<b>cUL</b>	ECBT8
		General ordering information	
		<b>EAN13 code</b>	8015747263375
		<b>eCl@ss 8.1</b>	27440202
		<b>ETIM 7.0</b>	EC000437
		Packaging Information	
		<b>Sub-packaging length</b>	210,00 mm
		<b>Sub-packaging height</b>	40,00 mm
		<b>Sub-packaging width</b>	175,00 mm
		<b>Sub-packaging weight</b>	0,86 kg
		<b>Sub-packaging volume</b>	1,47 dm <sup>3</sup>
		<b>Sub-packaging description</b>	Carton box
		<b>Sub-packaging quantity</b>	10 Pcs
		<b>Sub-packaging EAN barcode</b>	8015747263399

Part number

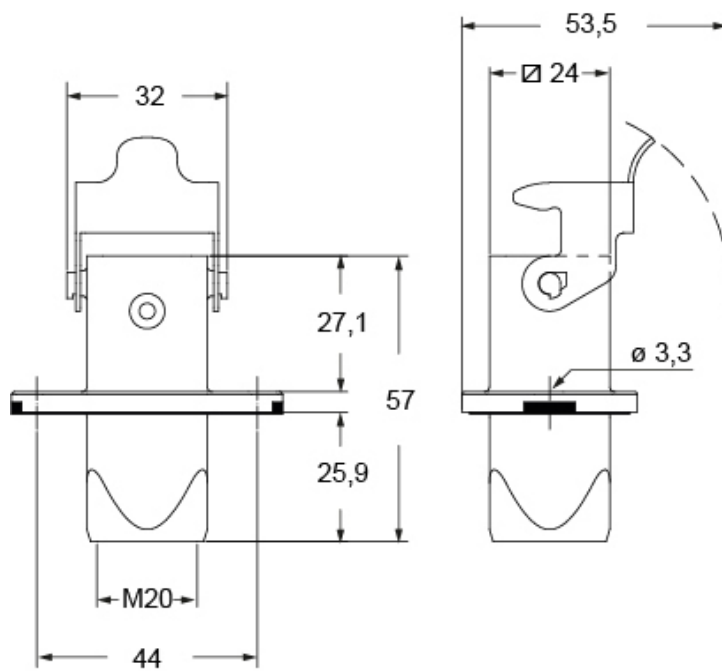
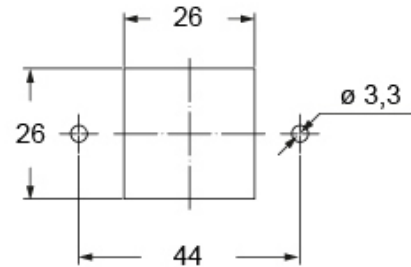
# MKAS IVG20



Catalogue drawings



Catalogue drawings



## Notes

Dimensions shown in mm are not binding and may be changed without notice.