

Part number

MHPXW 50.32



Surface mounting housing, W-TYPE series,
with 2 levers, M32 cable entry, size "66.40"

Product description

Product type	Surface mounting housing
Series	W-TYPE
Closing type	With 2 levers
Size	Size "66.40"
Cable entry	With cable entry M32

Technical data

IP degree of protection	IP65 / IP66 / IP69
--------------------------------	--------------------

Further technical details

Operating temperature range (min, max)	-40°C...+125°C
---	----------------

Material properties

Other materials	Lever: Stainless steel, polyamide (PA)
Colour	RAL 9005 black
RoHs conformity	Compliant
China RoHs - EFUP	E
REACH SVHC substances	No

Approvals / Standards

Certifications	DNV, BV
UL	ECBT2
cUL	ECBT8

General ordering information

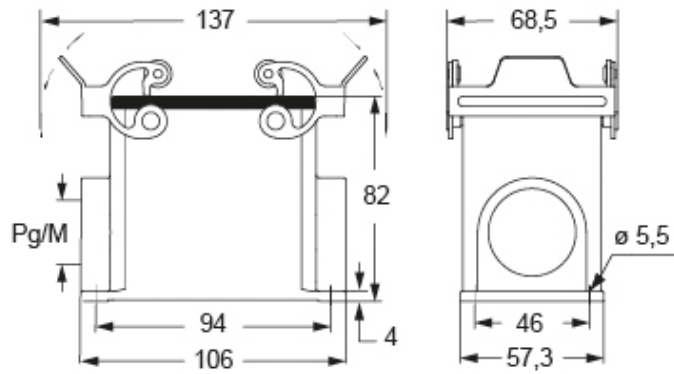
EAN13 code	8015747276436
eCl@ss 8.1	27440202
ETIM 7.0	EC000437

Part number

MHPXW 50.32



Catalogue drawings



Notes

Dimensions shown in mm are not binding and may be changed without notice.