

Part number

MGV 16.50



Hood, IP68 series, with 2 screws, M50 top cable entry, size "77.27"

Product description

| | |
|---------------------|------------------------|
| Product type | Hood |
| Series | IP68 |
| Closing type | With 2 screws |
| Size | Size 77.27 |
| Cable entry | Top cable entry M50 |

Technical data

IP degree of protection IP66 / IP68 / IP69

Further technical details

| | |
|---|----------------|
| Weight | 460,00 g |
| Operating temperature range (min, max) | -40°C...+125°C |

Material properties

| | |
|------------------------------|-------------------------|
| Main material | Aluminium die-cast |
| Other materials | Screws: Stainless steel |
| Colour | RAL 9005 black |
| RoHs conformity | Compliant |
| China RoHs - EFUP | E |
| REACH SVHC substances | No |

Approvals / Standards

| | |
|-----------------------|---------|
| Certifications | DNV, BV |
| UL | ECBT2 |
| cUL | ECBT8 |

General ordering information

| | |
|-------------------|---------------|
| EAN13 code | 8015747142366 |
| eCl@ss 8.1 | 27440202 |
| ETIM 7.0 | EC000437 |

Packaging Information

| | |
|----------------------------------|----------------------|
| Packaging length | 175,00 mm |
| Packaging height | 135,00 mm |
| Packaging width | 130,00 mm |
| Packaging weight | 1,00 kg |
| Packaging volume | 3,07 dm ³ |
| Packaging description | Carton box |
| Packaging quantity | 2 Pcs |
| Packaging EAN code | 8015747143073 |
| Sub-packaging weight | 0,50 kg |
| Sub-packaging description | Plastic packaging |
| Sub-packaging quantity | 1 Pcs |
| Sub-packaging EAN barcode | 8015747143080 |

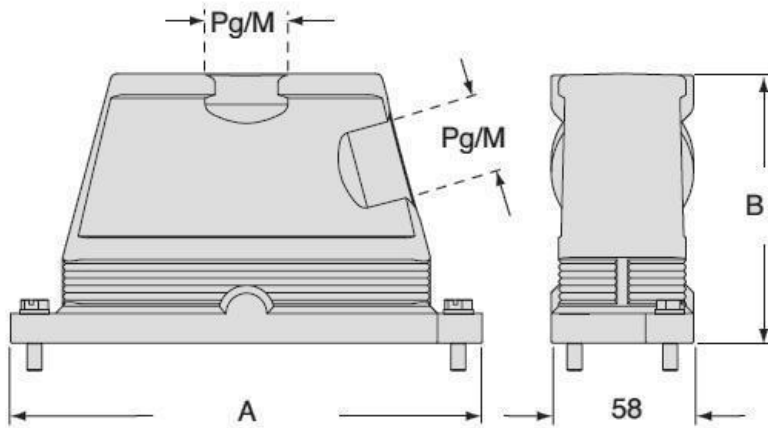
Part number

MGV 16.50



Catalogue drawings

CGO/MGO CGV/MGV



| | | A | B |
|----------------|-------------------|----------|----------|
| CGO/MGO | CGV/MGV 06 | 133 | 101 |
| CGO/MGO | CGV/MGV 10 | 146 | 101 |
| CGO/MGO | CGV/MGV 16 | 166 | 111 |
| CGO/MGO | CGV/MGV 24 | 193 | 111 |

Notes

Dimensions shown in mm are not binding and may be changed without notice.