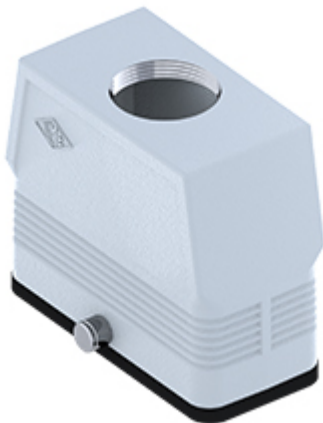


Part number

MFV 16 GYC40



Hood, CENTRAL LEVER series, with 2 pegs, M40 top cable entry without adapter, size "77.27", high construction

Product description

Product type	Hood
Series	CENTRAL LEVER
Closing type	With 2 pegs
Size	Size 77.27
Cable entry	Top cable entry M40
Specification	High construction

Technical data

IP degree of protection IP65

Further technical details

Weight	1,00 g
Operating temperature range (min, max)	-40°C...+125°C

Material properties

Other materials	Gasket: NBR
Colour	RAL 7040 grey
RoHs conformity	Compliant
China RoHs - EFUP	E
REACH SVHC substances	No

Approvals / Standards

UL	ECBT2
cUL	ECBT8

General ordering information

EAN13 code	8015747264945
eCl@ss 8.1	27440202
ETIM 7.0	EC000437

Packaging Information

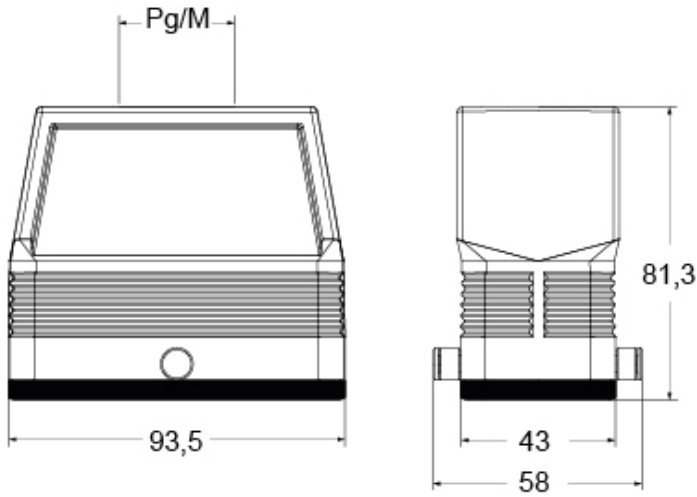
Packaging length	255,00 mm
Packaging height	150,00 mm
Packaging width	180,00 mm
Packaging volume	6,89 dm ³
Packaging description	Carton box
Packaging quantity	10 Pcs
Packaging EAN code	8015747264952
Sub-packaging description	Plastic packaging
Sub-packaging quantity	5 Pcs
Sub-packaging EAN barcode	8015747264969

Part number

MFV 16 GYC40



Catalogue drawings



Notes

Dimensions shown in mm are not binding and may be changed without notice.